
Product Name: Lambda Light chain (14H15) Rabbit Monoclonal Antibody**Catalog #: AMRe13188**

For research use only.

Summary

Description	Recombinant rabbit monoclonal antibody
Host	Rabbit
Application	WB,IHC,ICC/IF
Reactivity	Human
Conjugation	Unconjugated
Modification	Unmodified
Isotype	IgG
Clonality	Monoclonal
Form	Liquid
Concentration	0.5mg/ml. The concentration of this product may be batch-dependent.
Storage	Aliquot and store at -20°C (valid for 12 months). Avoid freeze/thaw cycles.
Shipping	Ice bags
Buffer	Rabbit IgG in phosphate buffered saline , pH 7.4, 150mM NaCl, 0.02% New type preservative N and 50% glycerol. Store at +4°C short term. Store at -20°C long term. Avoid freeze / thaw cycle.
Purification	Affinity purification

Application

Dilution Ratio	WB 1:1000-1:10000,IHC 1:200-1:500,ICC/IF 1:100-1:200
Molecular Weight	25kDa

Antigen Information

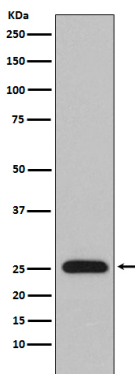
Gene Name	Bence Jones protein; BJP; Constant region of lambda light chains; Ig lambda chain C regions;
Alternative Names	IGLC; IGLC1; IGLC2; IGLC3; IGLC6; IGLV; Immunoglobulin lambda constant 1; Mcg marker; Paraprotein;
Gene ID	
SwissProt ID	P01701/P01842
Immunogen	Full length native protein

Background

All five immunoglobulin classes share the same basic four polypeptide chain structure of two heavy-chains and two light chains. There are five heavy chain types, and two light-chain types (Kappa and Lambda) both having a molecular weight of 22.5kDa. Any heavy-chain type can associate with either light-chain type, but on any immunoglobulin molecule both light-chains are of the same type.

Research Area

Image Data



Western blot analysis of Lambda Light chain expression in human plasma lysate.