

Product Name: KLF4 (11U14) Rabbit Monoclonal Antibody**Catalog #: AMRe13061**

For research use only.

Summary

Description	Recombinant rabbit monoclonal antibody
Host	Rabbit
Application	WB,IHC,ICC/IF,FC
Reactivity	Human
Conjugation	Unconjugated
Modification	Unmodified
Isotype	IgG
Clonality	Monoclonal
Form	Liquid
Concentration	0.3mg/ml. The concentration of this product may be batch-dependent.
Storage	Aliquot and store at -20°C (valid for 12 months). Avoid freeze/thaw cycles.
Shipping	Ice bags
Buffer	Rabbit IgG in phosphate buffered saline , pH 7.4, 150mM NaCl, 0.02% New type preservative N and 50% glycerol. Store at +4°C short term. Store at -20°C long term. Avoid freeze / thaw cycle.
Purification	Affinity purification

Application

Dilution Ratio	WB 1:500-1:2000,IHC 1:100-1:200,ICC/IF 1:100-1:200,FC 1:20-1:50
Molecular Weight	55kDa

Antigen Information

Gene Name	KLF4
Alternative Names	Krueppel-like factor 4; KLF4; EZF; GKLF;
Gene ID	9314.0
SwissProt ID	O43474
Immunogen	Recombinant protein of human KLF4

Background

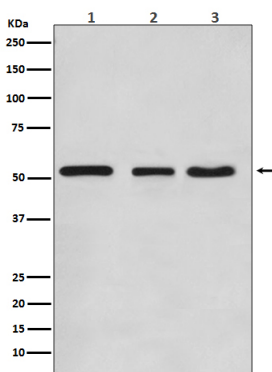
KLF4 is a member of the erythroid Kruppel-like factor (EKLF) multigene family that is highly expressed in the differentiating

layers of the epidermis. KLF4 plays a critical role in the differentiation of epithelial cells and is essential for normal gastric homeostasis and function as both a repressor and activator of transcription. Transcription factor; can act both as activator and as repressor. Binds the 5'-CACCC-3' core sequence. Binds to the promoter region of its own gene and can activate its own transcription. Regulates the expression of key transcription factors during embryonic development. Plays an important role in maintaining embryonic stem cells, and in preventing their differentiation. Required for establishing the barrier function of the skin and for postnatal maturation and maintenance of the ocular surface. Involved in the differentiation of epithelial cells and may also function in skeletal and kidney development. Contributes to the down-regulation of p53/TP53 transcription.

Research Area

Epigenetics and Nuclear Signaling

Image Data



Western blot analysis of KLF4 expression in (1) HeLa cell lysate; (2) NIH/3T3 cell lysate; (3) C6 cell lysate.