

**Product Name: KIFAP3 (10A15) Rabbit Monoclonal Antibody****Catalog #: AMRe13020**

For research use only.

**Summary**

<b>Description</b>	Recombinant rabbit monoclonal antibody
<b>Host</b>	Rabbit
<b>Application</b>	WB,IHC
<b>Reactivity</b>	Human,Mouse,Rat
<b>Conjugation</b>	Unconjugated
<b>Modification</b>	Unmodified
<b>Isotype</b>	IgG
<b>Clonality</b>	Monoclonal
<b>Form</b>	Liquid
<b>Concentration</b>	0.5mg/ml. The concentration of this product may be batch-dependent.
<b>Storage</b>	Aliquot and store at -20°C (valid for 12 months). Avoid freeze/thaw cycles.
<b>Shipping</b>	Ice bags
<b>Buffer</b>	Rabbit IgG in phosphate buffered saline , pH 7.4, 150mM NaCl, 0.02% New type preservative N and 50% glycerol. Store at +4°C short term. Store at -20°C long term. Avoid freeze / thaw cycle.
<b>Purification</b>	Affinity purification

**Application**

<b>Dilution Ratio</b>	WB 1:1000-1:5000,IHC 1:200-1:500
<b>Molecular Weight</b>	91kDa

**Antigen Information**

<b>Gene Name</b>	KIFAP3
<b>Alternative Names</b>	KAP3; KIF3AP; Kifap3; Kinesin associated protein 3; SMAP;
<b>Gene ID</b>	22920.0
<b>SwissProt ID</b>	Q92845
<b>Immunogen</b>	A synthetic peptide of human KIFAP3

**Background**

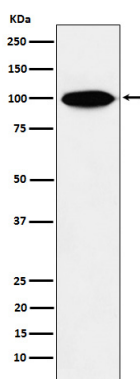
Involved in tethering the chromosomes to the spindle pole and in chromosome movement. Binds to the tail domain of the

KIF3A/KIF3B heterodimer to form a heterotrimeric KIF3 complex and may regulate the membrane binding of this complex. Involved in tethering the chromosomes to the spindle pole and in chromosome movement. Binds to the tail domain of the KIF3A/KIF3B heterodimer to form a heterotrimeric KIF3 complex and may regulate the membrane binding of this complex (By similarity).

## Research Area

Epigenetics and Nuclear Signaling

## Image Data



Western blot analysis of KIFAP3 expression in HeLa cell lysate.