
Product Name: Kappa light chain (6H2) Rabbit Monoclonal Antibody**Catalog #: AMRe12898**

For research use only.

Summary

Description	Recombinant rabbit monoclonal antibody
Host	Rabbit
Application	WB,IHC,ICC/IF
Reactivity	Human
Conjugation	Unconjugated
Modification	Unmodified
Isotype	IgG
Clonality	Monoclonal
Form	Liquid
Concentration	0.5mg/ml. The concentration of this product may be batch-dependent.
Storage	Aliquot and store at -20°C (valid for 12 months). Avoid freeze/thaw cycles.
Shipping	Ice bags
Buffer	Rabbit IgG in phosphate buffered saline , pH 7.4, 150mM NaCl, 0.02% New type preservative N and 50% glycerol. Store at +4°C short term. Store at -20°C long term. Avoid freeze / thaw cycle.
Purification	Affinity purification

Application

Dilution Ratio	WB 1:1000-1:5000,IHC 1:200-1:500,ICC/IF 1:200-1:500
Molecular Weight	25kDa

Antigen Information

Gene Name	
Alternative Names	HCAK1; IGKC; IGKCD;
Gene ID	
SwissProt ID	P01601/P01834
Immunogen	Full length native protein

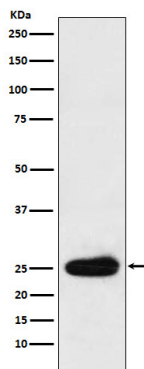
Background

V region of the variable domain of immunoglobulin light chains that participates in the antigen recognition

(PubMed:24600447). Immunoglobulins, also known as antibodies, are membrane-bound or secreted glycoproteins produced by B lymphocytes.

Research Area

Image Data



Western blot analysis of Kappa light chain expression in Human plasma cell lysate.