
Product Name: IP3 Receptor (13U15) Rabbit Monoclonal Antibody**Catalog #: AMRe12697**

For research use only.

Summary

Description	Recombinant rabbit monoclonal antibody
Host	Rabbit
Application	WB,IHC,IP,IF-P
Reactivity	Human,Mouse,Rat
Conjugation	Unconjugated
Modification	Unmodified
Isotype	IgG
Clonality	Monoclonal
Form	Liquid
Concentration	0.5mg/ml. The concentration of this product may be batch-dependent.
Storage	Aliquot and store at -20°C (valid for 12 months). Avoid freeze/thaw cycles.
Shipping	Ice bags
Buffer	Rabbit IgG in phosphate buffered saline , pH 7.4, 150mM NaCl, 0.02% New type preservative N and 50% glycerol. Store at +4°C short term. Store at -20°C long term. Avoid freeze / thaw cycle.
Purification	Affinity purification

Application

Dilution Ratio	WB 1:1000-1:5000,IHC 1:200-1:1000,IP 1:20-1:50,IF-P 1:200-1:1000
Molecular Weight	314kDa

Antigen Information

Gene Name	ITPR1
Alternative Names	5-trisphosphate receptor; Inositol 1; InsP3R1; IP3; IP3 receptor; IP3R 1; IP3R; IP3R1; Itpr1; SCA15; SCA16; SCA29;
Gene ID	3708.0
SwissProt ID	Q14643
Immunogen	A synthetic peptide of human IP3 receptor

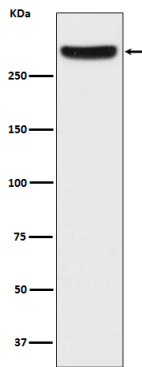
Background

Intracellular channel that mediates calcium release from the endoplasmic reticulum following stimulation by inositol 1,4,5-trisphosphate. Intracellular channel that mediates calcium release from the endoplasmic reticulum following stimulation by inositol 1,4,5- trisphosphate (PubMed:27108797). Involved in the regulation of epithelial secretion of electrolytes and fluid through the interaction with AHCYL1 (By similarity). Plays a role in ER stress-induced apoptosis. Cytoplasmic calcium released from the ER triggers apoptosis by the activation of CaM kinase II, eventually leading to the activation of downstream apoptosis pathways (By similarity).

Research Area

Signal Transduction

Image Data



Western blot analysis of IP3 Receptor expression in HeLa cell lysate.