

**Product Name: Involucrin (10K9) Rabbit Monoclonal Antibody****Catalog #: AMRe12690**

For research use only.

**Summary**

<b>Description</b>	Recombinant rabbit monoclonal antibody
<b>Host</b>	Rabbit
<b>Application</b>	WB,FC
<b>Reactivity</b>	Human
<b>Conjugation</b>	Unconjugated
<b>Modification</b>	Unmodified
<b>Isotype</b>	IgG
<b>Clonality</b>	Monoclonal
<b>Form</b>	Liquid
<b>Concentration</b>	0.5mg/ml. The concentration of this product may be batch-dependent.
<b>Storage</b>	Aliquot and store at -20°C (valid for 12 months). Avoid freeze/thaw cycles.
<b>Shipping</b>	Ice bags
<b>Buffer</b>	Rabbit IgG in phosphate buffered saline , pH 7.4, 150mM NaCl, 0.02% New type preservative N and 50% glycerol. Store at +4°C short term. Store at -20°C long term. Avoid freeze / thaw cycle.
<b>Purification</b>	Affinity purification

**Application**

<b>Dilution Ratio</b>	WB 1:2000-1:20000,FC 1:20-1:50
<b>Molecular Weight</b>	68kDa

**Antigen Information**

<b>Gene Name</b>	IVL
<b>Alternative Names</b>	Involucrin; IVL;
<b>Gene ID</b>	3713.0
<b>SwissProt ID</b>	P07476
<b>Immunogen</b>	A synthetic peptide of human Involucrin

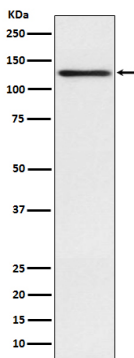
**Background**

Part of the insoluble cornified cell envelope (CE) of stratified squamous epithelia. Part of the insoluble cornified cell envelope

(CE) of stratified squamous epithelia.

## Research Area

## Image Data



Western blot analysis of Involucrin expression in A431 cell lysate.