

---

**Product Name: Insulin Receptor R (13V2) Rabbit Monoclonal Antibody****Catalog #: AMRe12641**

For research use only.

**Summary**

<b>Description</b>	Recombinant rabbit monoclonal antibody
<b>Host</b>	Rabbit
<b>Application</b>	WB,IHC,IF-P
<b>Reactivity</b>	Human,Mouse,Rat
<b>Conjugation</b>	Unconjugated
<b>Modification</b>	Unmodified
<b>Isotype</b>	IgG
<b>Clonality</b>	Monoclonal
<b>Form</b>	Liquid
<b>Concentration</b>	0.5mg/ml. The concentration of this product may be batch-dependent.
<b>Storage</b>	Aliquot and store at -20°C (valid for 12 months). Avoid freeze/thaw cycles.
<b>Shipping</b>	Ice bags
<b>Buffer</b>	Rabbit IgG in phosphate buffered saline , pH 7.4, 150mM NaCl, 0.02% New type preservative N and 50% glycerol. Store at +4°C short term. Store at -20°C long term. Avoid freeze / thaw cycle.
<b>Purification</b>	Affinity purification

**Application**

<b>Dilution Ratio</b>	WB 1:500-1:2000,IHC 1:50-1:100,IF-P 1:50-1:100
<b>Molecular Weight</b>	144kDa

**Antigen Information**

<b>Gene Name</b>	INSRR
<b>Alternative Names</b>	INSRR; Insulin receptor related receptor precursor; IR related receptor; IRR; SIRR;
<b>Gene ID</b>	3645.0
<b>SwissProt ID</b>	P14616
<b>Immunogen</b>	A synthetic peptide of human IRR

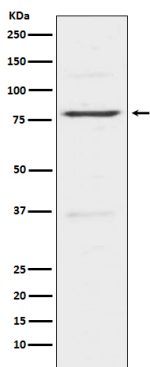
**Background**

This receptor probably binds an insulin related protein and has a tyrosine-protein kinase activity. It phosphorylates the insulin

receptor substrates IRS-1 and IRS-2. Receptor with tyrosine-protein kinase activity. Functions as a pH sensing receptor which is activated by increased extracellular pH. Activates an intracellular signaling pathway that involves IRS1 and AKT1/PKB.

## Research Area

## Image Data



Western blot analysis of Insulin Receptor R expression in HeLa cell lysate.