

Product Name: Human IgG (3R17) Rabbit Monoclonal Antibody**Catalog #: AMRe12279**

For research use only.

Summary

Description	Recombinant rabbit monoclonal antibody
Host	Rabbit
Application	WB,IHC,IF-P
Reactivity	Human
Conjugation	Unconjugated
Modification	Unmodified
Isotype	IgG
Clonality	Monoclonal
Form	Liquid
Concentration	0.5mg/ml. The concentration of this product may be batch-dependent.
Storage	Aliquot and store at -20°C (valid for 12 months). Avoid freeze/thaw cycles.
Shipping	Ice bags
Buffer	Rabbit IgG in phosphate buffered saline , pH 7.4, 150mM NaCl, 0.02% New type preservative N and 50% glycerol. Store at +4°C short term. Store at -20°C long term. Avoid freeze / thaw cycle.
Purification	Affinity purification

Application

Dilution Ratio	WB 1:1000-1:5000,IHC 1:100-1:200,IF-P 1:100-1:200
Molecular Weight	52kDa

Antigen Information

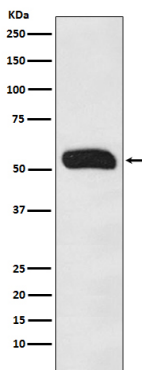
Gene Name	G1m marker; G2m marker; G3m marker; G4m marker; HDC; Heavy chain disease protein;
Alternative Names	Human immunoglobulin G; Ig gamma 1 chain C region; Ig gamma 2 chain C region; Ig gamma 3 chain C region; Ig gamma 4 chain C region; IgG heavy chain locus; IGHG1; IGHG2; IGHG3; IGHG4;
Gene ID	
SwissProt ID	P01857/P01859/P01860/P01861
Immunogen	Recombinant protein of human Human IgG

Background

IgG is a monomeric immunoglobulin, built of two heavy chains gamma and two light chains. Each molecule has two antigen binding sites. This is the most abundant immunoglobulin and is approximately equally distributed in blood and in tissue liquids, constituting 75% of serum immunoglobulins in humans.

Research Area

Image Data



Western blot analysis of Human IgG expression in Human plasma lysate.