

Product Name: Hsp105 (1A1) Rabbit Monoclonal Antibody
Catalog #: AMRe12238

Summary

Production Name	Hsp105 (1A1) Rabbit Monoclonal Antibody
Description	Rabbit Monoclonal Antibody
Host	Rabbit
Application	WB,IHC-P,ICC/IF,IP
Reactivity	Human,Mouse,Rat

Performance

Conjugation	Unconjugated
Modification	Unmodified
Isotype	IgG
Clonality	Monoclonal
Form	Liquid
Storage	Store at 4°C short term. Aliquot and store at -20°C long term. Avoid freeze/thaw cycles. Rabbit IgG in phosphate buffered saline , pH 7.4, 150mM NaCl, 0.02% New type
Buffer	preservative N and 50% glycerol. Store at +4°C short term. Store at -20°C long term. Avoid freeze / thaw cycle.
Purification	Affinity purification

Immunogen

Gene Name	HSPH1
Alternative Names	Antigen NY-CO-25; Heat shock protein 105 kDa; HS105; HSP105; HSP105A; HSP105B; HSP110; HSPH1;
Gene ID	10808.0
SwissProt ID	Q92598.

Application

Dilution Ratio	WB 1:1000-1:5000, IHC-P/IF-P 1:50-1:200, ICC/IF 1:100-1:200, IP 1:10-1:100
Molecular Weight	97kDa

Product Name: Hsp105 (1A1) Rabbit Monoclonal Antibody
Catalog #: AMRe12238

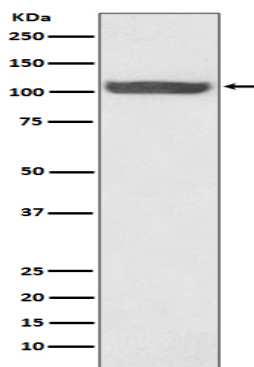


Background

HSP105 is a molecular chaperone of the heat shock protein 70 family. It has ATPase activity. It is expressed at especially high levels in mammalian brain and has been shown to suppress apoptosis in neuronal cells and to prevent the aggregation of proteins following heat shock. It is known to interact with a variety of proteins including alpha-tubulin and the androgen receptor. It acts as a nucleotide-exchange factor (NEF) for chaperone proteins HSPA1A and HSPA1B, promoting the release of ADP from HSPA1A/B thereby triggering client/substrate protein release (PubMed: [24318877](http://www.uniprot.org/citations/24318877)). It prevents the aggregation of denatured proteins in cells under severe stress, on which the ATP levels decrease markedly. It inhibits HSPA8/HSC70 ATPase and chaperone activities (By similarity).

Research Area

Image Data



Western blot analysis of Hsp105 expression in HeLa cell lysate.

Note

For research use only.