

Product Name: HSD11B1 (17P16) Rabbit Monoclonal Antibody**Catalog #: AMRe12219**

For research use only.

Summary

Description	Recombinant rabbit monoclonal antibody
Host	Rabbit
Application	WB,IHC,ICC/IF,FC
Reactivity	Human
Conjugation	Unconjugated
Modification	Unmodified
Isotype	IgG
Clonality	Monoclonal
Form	Liquid
Concentration	0.5mg/ml. The concentration of this product may be batch-dependent.
Storage	Aliquot and store at -20°C (valid for 12 months). Avoid freeze/thaw cycles.
Shipping	Ice bags
Buffer	Rabbit IgG in phosphate buffered saline , pH 7.4, 150mM NaCl, 0.02% New type preservative N and 50% glycerol. Store at +4°C short term. Store at -20°C long term. Avoid freeze / thaw cycle.
Purification	Affinity purification

Application

Dilution Ratio	WB 1:2000-1:20000,IHC 1:200-1:2000,ICC/IF 1:50-1:100,FC 1:20-1:50
Molecular Weight	32kDa

Antigen Information

Gene Name	HSD11B1
Alternative Names	11-DH; 11-beta-HSD1; HSD11B1; HSD11; HSD11L; 11 beta HSD1;
Gene ID	3290.0
SwissProt ID	P28845
Immunogen	A synthetic peptide of human HSD11B1

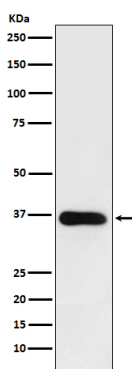
Background

Catalyzes reversibly the conversion of cortisol to the inactive metabolite cortisone. Catalyzes reversibly the conversion of 7-

ketocholesterol to 7-beta-hydroxycholesterol. In intact cells, the reaction runs only in one direction, from 7-ketocholesterol to 7-beta-hydroxycholesterol. Catalyzes reversibly the conversion of cortisol to the inactive metabolite cortisone (PubMed:10497248). Catalyzes reversibly the conversion of 7-ketocholesterol to 7-beta-hydroxycholesterol. In intact cells, the reaction runs only in one direction, from 7- ketocholesterol to 7-beta-hydroxycholesterol (By similarity).

Research Area

Image Data



Western blot analysis of HSD11B1 expression in human fetal liver lysate.