

Product Name: Hemopexin (18Q19) Rabbit Monoclonal Antibody**Catalog #: AMRe11977**

For research use only.

Summary

Description	Recombinant rabbit monoclonal antibody
Host	Rabbit
Application	WB
Reactivity	Human
Conjugation	Unconjugated
Modification	Unmodified
Isotype	IgG
Clonality	Monoclonal
Form	Liquid
Concentration	0.5mg/ml. The concentration of this product may be batch-dependent.
Storage	Aliquot and store at -20°C (valid for 12 months). Avoid freeze/thaw cycles.
Shipping	Ice bags
Buffer	Rabbit IgG in phosphate buffered saline , pH 7.4, 150mM NaCl, 0.02% New type preservative N and 50% glycerol. Store at +4°C short term. Store at -20°C long term. Avoid freeze / thaw cycle.
Purification	Affinity purification

Application

Dilution Ratio	WB 1:5000-1:50000
Molecular Weight	52kDa

Antigen Information

Gene Name	HPX
Alternative Names	Beta 1B glycoprotein; HEMO; Hemopexin; Hpx;
Gene ID	3263.0
SwissProt ID	P02790
Immunogen	A synthetic peptide of human Hemopexin

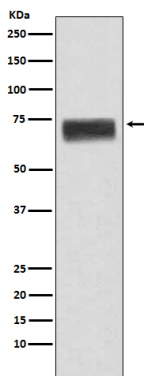
Background

Binds heme and transports it to the liver for breakdown and iron recovery, after which the free hemopexin returns to the

circulation. Binds heme and transports it to the liver for breakdown and iron recovery, after which the free hemopexin returns to the circulation.

Research Area

Image Data



Western blot analysis of Hemopexin expression in human fetal liver lysate.