
Product Name: Haptoglobin (11E4) Rabbit Monoclonal Antibody**Catalog #: AMRe11898**

For research use only.

Summary

Description	Recombinant rabbit monoclonal antibody
Host	Rabbit
Application	WB,IHC,FC,IF-P
Reactivity	Human,Mouse,Rat
Conjugation	Unconjugated
Modification	Unmodified
Isotype	IgG
Clonality	Monoclonal
Form	Liquid
Concentration	0.5mg/ml. The concentration of this product may be batch-dependent.
Storage	Aliquot and store at -20°C (valid for 12 months). Avoid freeze/thaw cycles.
Shipping	Ice bags
Buffer	Supplied in 50mM Tris-Glycine(pH 7.4), 0.15M NaCl, 40%Glycerol, 0.01% New type preservative N and 0.05% protective protein.
Purification	Affinity purification

Application

Dilution Ratio	WB 1:500-1:2000,IHC 1:1000-1:5000,FC 1:200-1:1000,IF-P 1:1000-1:5000
Molecular Weight	39kDa

Antigen Information

Gene Name	HP
Alternative Names	Binding peptide; Haptoglobin alpha chain; Haptoglobin beta chain; HP2ALPHA2; HPA1S; Zonulin;
Gene ID	3240.0
SwissProt ID	P00738
Immunogen	Recombinant protein of human Haptoglobin

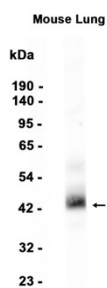
Background

Hemoglobin/haptoglobin complexes are rapidly cleared by the macrophage CD163 scavenger receptor expressed on the

surface of liver Kupfer cells through an endocytic lysosomal degradation pathway. Uncleaved haptoglobin, also known as zonulin, plays a role in intestinal permeability, allowing intercellular tight junction disassembly, and controlling the equilibrium between tolerance and immunity to non-self antigens. As a result of hemolysis, hemoglobin is found to accumulate in the kidney and is secreted in the urine. Haptoglobin captures, and combines with free plasma hemoglobin to allow hepatic recycling of heme iron and to prevent kidney damage. Haptoglobin also acts as an antioxidant, has antibacterial activity, and plays a role in modulating many aspects of the acute phase response. Hemoglobin/haptoglobin complexes are rapidly cleared by the macrophage CD163 scavenger receptor expressed on the surface of liver Kupfer cells through an endocytic lysosomal degradation pathway.

Research Area

Image Data



Western blot analysis of extracts from Mouse lung tissue using Haptoglobin (11E4) Rabbit Monoclonal Antibody at 1:1000.