
Product Name: GRB2 (19X8) Rabbit Monoclonal Antibody**Catalog #: AMRe11750**

For research use only.

Summary

Description	Recombinant rabbit monoclonal antibody
Host	Rabbit
Application	WB,IHC,ICC/IF,FC,IF-P
Reactivity	Human,Mouse,Rat
Conjugation	Unconjugated
Modification	Unmodified
Isotype	IgG
Clonality	Monoclonal
Form	Liquid
Concentration	0.5mg/ml. The concentration of this product may be batch-dependent.
Storage	Aliquot and store at -20°C (valid for 12 months). Avoid freeze/thaw cycles.
Shipping	Ice bags
Buffer	Rabbit IgG in phosphate buffered saline , pH 7.4, 150mM NaCl, 0.02% New type preservative N and 50% glycerol. Store at +4°C short term. Store at -20°C long term. Avoid freeze / thaw cycle.
Purification	Affinity purification

Application

Dilution Ratio	WB 1:500-1:2000,IHC 1:50-1:200,ICC/IF 1:20-1:50,FC 1:20-1:50,IF-P 1:50-1:200
Molecular Weight	25kDa

Antigen Information

Gene Name	GRB2
Alternative Names	ASH; Grb2; Grb3 3; HT027; NCKAP2; Protein ash; SEM5;
Gene ID	2885.0
SwissProt ID	P62993
Immunogen	A synthetic peptide of human GRB2

Background

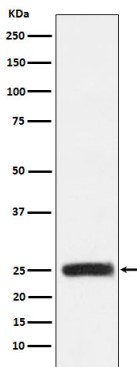
Adapter protein that provides a critical link between cell surface growth factor receptors and the Ras signaling pathway.

Adapter protein that provides a critical link between cell surface growth factor receptors and the Ras signaling pathway.

Research Area

Signal Transduction

Image Data



Western blot analysis of GRB2 expression in HEK293 cell lysate.