
Product Name: Gephyrin (8G16) Rabbit Monoclonal Antibody**Catalog #: AMRe11405**

For research use only.

Summary

Description	Recombinant rabbit monoclonal antibody
Host	Rabbit
Application	WB,IHC,IF-P
Reactivity	Human,Mouse,Rat
Conjugation	Unconjugated
Modification	Unmodified
Isotype	IgG
Clonality	Monoclonal
Form	Liquid
Concentration	0.5mg/ml. The concentration of this product may be batch-dependent.
Storage	Aliquot and store at -20°C (valid for 12 months). Avoid freeze/thaw cycles.
Shipping	Ice bags
Buffer	Rabbit IgG in phosphate buffered saline , pH 7.4, 150mM NaCl, 0.02% New type preservative N and 50% glycerol. Store at +4°C short term. Store at -20°C long term. Avoid freeze / thaw cycle.
Purification	Affinity purification

Application

Dilution Ratio	WB 1:1000-1:5000,IHC 1:100-1:200,IF-P 1:100-1:200
Molecular Weight	80kDa

Antigen Information

Gene Name	GPHN
Alternative Names	Domain E; Domain G; GEPH; GPH; GPHN; GPHRYN;
Gene ID	10243.0
SwissProt ID	Q9NQX3
Immunogen	A synthetic peptide of human Gephyrin

Background

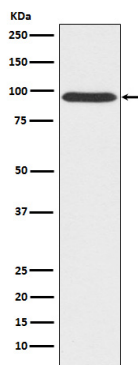
Microtubule-associated protein involved in membrane protein-cytoskeleton interactions. It is thought to anchor the inhibitory

glycine receptor (GLYR) to subsynaptic microtubules (By similarity). Catalyzes two steps in the biosynthesis of the molybdenum cofactor. Microtubule-associated protein involved in membrane protein- cytoskeleton interactions. It is thought to anchor the inhibitory glycine receptor (GLYR) to subsynaptic microtubules (By similarity). Acts as a major instructive molecule at inhibitory synapses, where it also clusters GABA type A receptors (PubMed:25025157, PubMed:26613940).

Research Area

Neuroscience

Image Data



Western blot analysis of Gephyrin expression in 293T cell lysate.