

---

**Product Name: gamma Sarcoglycan (19U4) Rabbit Monoclonal Antibody****Catalog #: AMRe11287**

For research use only.

**Summary**

<b>Description</b>	Recombinant rabbit monoclonal antibody
<b>Host</b>	Rabbit
<b>Application</b>	WB,IHC,IP,IF-P
<b>Reactivity</b>	Human,Mouse
<b>Conjugation</b>	Unconjugated
<b>Modification</b>	Unmodified
<b>Isotype</b>	IgG
<b>Clonality</b>	Monoclonal
<b>Form</b>	Liquid
<b>Concentration</b>	0.5mg/ml. The concentration of this product may be batch-dependent.
<b>Storage</b>	Aliquot and store at -20°C (valid for 12 months). Avoid freeze/thaw cycles.
<b>Shipping</b>	Ice bags
<b>Buffer</b>	Rabbit IgG in phosphate buffered saline , pH 7.4, 150mM NaCl, 0.02% New type preservative N and 50% glycerol. Store at +4°C short term. Store at -20°C long term. Avoid freeze / thaw cycle.
<b>Purification</b>	Affinity purification

**Application**

<b>Dilution Ratio</b>	WB 1:500-1:2000,IHC 1:200-1:500,IP 1:20-1:50,IF-P 1:200-1:500
<b>Molecular Weight</b>	32kDa

**Antigen Information**

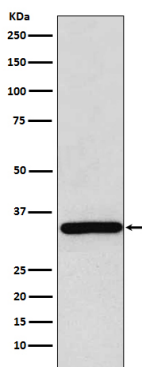
<b>Gene Name</b>	SGCG
<b>Alternative Names</b>	35DAG; DAGA4; DMDA; Gamma-sarcoglycan; LGMD2C; MAM; Sarcoglycan gamma; SCARMD2; SCG3; SGCG; TYPE;
<b>Gene ID</b>	6445.0
<b>SwissProt ID</b>	Q13326
<b>Immunogen</b>	Recombinant protein of human gamma Sarcoglycan

**Background**

Component of the sarcoglycan complex, a subcomplex of the dystrophin-glycoprotein complex which forms a link between the F-actin cytoskeleton and the extracellular matrix. Component of the sarcoglycan complex, a subcomplex of the dystrophin-glycoprotein complex which forms a link between the F-actin cytoskeleton and the extracellular matrix.

## Research Area

## Image Data



Western blot analysis of gamma Sarcoglycan expression in Human skeletal muscle lysate.