

---

**Product Name: FSH beta (FSHB) (3X13) Rabbit Monoclonal Antibody****Catalog #: AMRe11166**

For research use only.

**Summary**

<b>Description</b>	Recombinant rabbit monoclonal antibody
<b>Host</b>	Rabbit
<b>Application</b>	WB,ICC/IF
<b>Reactivity</b>	Human
<b>Conjugation</b>	Unconjugated
<b>Modification</b>	Unmodified
<b>Isotype</b>	IgG
<b>Clonality</b>	Monoclonal
<b>Form</b>	Liquid
<b>Concentration</b>	0.5mg/ml. The concentration of this product may be batch-dependent.
<b>Storage</b>	Aliquot and store at -20°C (valid for 12 months). Avoid freeze/thaw cycles.
<b>Shipping</b>	Ice bags
<b>Buffer</b>	Rabbit IgG in phosphate buffered saline , pH 7.4, 150mM NaCl, 0.02% New type preservative N and 50% glycerol. Store at +4°C short term. Store at -20°C long term. Avoid freeze / thaw cycle.
<b>Purification</b>	Affinity purification

**Application**

<b>Dilution Ratio</b>	WB 1:500-1:2000,ICC/IF 1:100-1:200
<b>Molecular Weight</b>	15kDa

**Antigen Information**

<b>Gene Name</b>	FSHB
<b>Alternative Names</b>	Follicle Stimulating Hormon; Follitropin beta chain; Follitropin subunit beta; FSHB; FSHbeta;
<b>Gene ID</b>	2488.0
<b>SwissProt ID</b>	P01225
<b>Immunogen</b>	A synthetic peptide of human FSH beta

**Background**

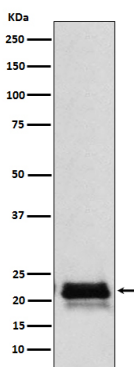
Follicle stimulating hormone enables ovarian folliculogenesis to the antral follicle stage and is essential for Sertoli cell

proliferation and maintenance of sperm quality in the testis. Together with the alpha chain CGA constitutes follitropin, the follicle-stimulating hormone, and provides its biological specificity to the hormone heterodimer. Binds FSHR, a G protein-coupled receptor, on target cells to activate downstream signaling pathways (PubMed:2494176, PubMed:24692546). Follitropin is involved in follicle development and spermatogenesis in reproductive organs (PubMed:407105, PubMed:8220432).

## Research Area

Neuroactive ligand-receptor interaction;GnRH;

## Image Data



Western blot analysis of FSH beta (FSHB) expression in Human pituitary lysate.