
Product Name: Estrogen Inducible Protein pS2 (5F16) Rabbit Monoclonal Antibody
Catalog #: AMRe10634

For research use only.

Summary

Description	Recombinant rabbit monoclonal antibody
Host	Rabbit
Application	WB,IHC,ICC/IF,FC,IP
Reactivity	Human
Conjugation	Unconjugated
Modification	Unmodified
Isotype	IgG
Clonality	Monoclonal
Form	Liquid
Concentration	0.5mg/ml. The concentration of this product may be batch-dependent.
Storage	Aliquot and store at -20°C (valid for 12 months). Avoid freeze/thaw cycles.
Shipping	Ice bags
Buffer	Rabbit IgG in phosphate buffered saline , pH 7.4, 150mM NaCl, 0.02% New type preservative N and 50% glycerol. Store at +4°C short term. Store at -20°C long term. Avoid freeze / thaw cycle.
Purification	Affinity purification

Application

Dilution Ratio	WB 1:1000-1:5000,IHC 1:100-1:200,ICC/IF 1:100-1:200,FC 1:50-1:100,IP 1:10-1:100
Molecular Weight	9kDa

Antigen Information

Gene Name	TFF1
Alternative Names	hP1.A; HP1A; HPS2; pNR2; pS2; TFF1;
Gene ID	7031.0
SwissProt ID	P04155
Immunogen	A synthetic peptide of human TFF1/pS2

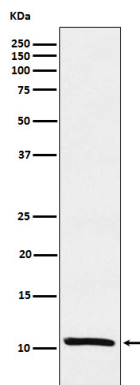
Background

Stabilizer of the mucous gel overlying the gastrointestinal mucosa that provides a physical barrier against various noxious

agents. May inhibit the growth of calcium oxalate crystals in urine. Stabilizer of the mucous gel overlying the gastrointestinal mucosa that provides a physical barrier against various noxious agents. May inhibit the growth of calcium oxalate crystals in urine.

Research Area

Image Data



Western blot analysis of Estrogen Inducible Protein pS2 expression in MCF-7 cell lysate.