
Product Name: EpCAM (15A7) Rabbit Monoclonal Antibody**Catalog #: AMRe10506**

For research use only.

Summary

Description	Recombinant rabbit monoclonal antibody
Host	Rabbit
Application	WB,IHC,IF-P
Reactivity	Human
Conjugation	Unconjugated
Modification	Unmodified
Isotype	IgG
Clonality	Monoclonal
Form	Liquid
Concentration	0.28mg/ml. The concentration of this product may be batch-dependent.
Storage	Aliquot and store at -20°C (valid for 12 months). Avoid freeze/thaw cycles.
Shipping	Ice bags
Buffer	Rabbit IgG in phosphate buffered saline , pH 7.4, 150mM NaCl, 0.02% New type preservative N and 50% glycerol. Store at +4°C short term. Store at -20°C long term. Avoid freeze / thaw cycle.
Purification	Affinity purification

Application

Dilution Ratio	WB 1:1000-1:5000,IHC 1:100-1:200,IF-P 1:100-1:200
Molecular Weight	35kDa

Antigen Information

Gene Name	EPCAM
Alternative Names	Epithelial cell adhesion molecule; Ep-CAM; CO17A; CD326; Cell surface glycoprotein Trop-1; EGP; Epithelial glycoprotein 314; EGP314; hEGP314; KS 1/4 antigen; KSA;
Gene ID	4072.0
SwissProt ID	P16422
Immunogen	A synthetic peptide of human EpCAM

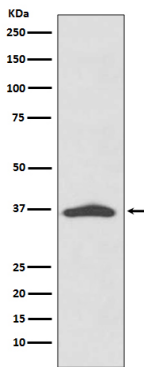
Background

Epithelial cell adhesion and activating molecule (EpCAM/CD326) is a transmembrane glycoprotein that mediates Ca²⁺ independent, homophilic adhesions on the basolateral surface of most epithelial cells. The antigen is being used as a target for immunotherapy treatment of human carcinomas. May act as a physical homophilic interaction molecule between intestinal epithelial cells (IECs) and intraepithelial lymphocytes (IELs) at the mucosal epithelium for providing immunological barrier as a first line of defense against mucosal infection. Plays a role in embryonic stem cells proliferation and differentiation. Up-regulates the expression of FABP5, MYC and cyclins A and E.

Research Area

Tags & Cell Markers

Image Data



Western blot analysis of EpCAM expression in A431 cell lysate.