

Product Name: EEA1 (3B7) Rabbit Monoclonal Antibody**Catalog #: AMRe10306**

For research use only.

Summary

Description	Recombinant rabbit monoclonal antibody
Host	Rabbit
Application	WB, ICC/IF
Reactivity	Human, Mouse, Rat
Conjugation	Unconjugated
Modification	Unmodified
Isotype	IgG
Clonality	Monoclonal
Form	Liquid
Concentration	0.3mg/ml. The concentration of this product may be batch-dependent.
Storage	Aliquot and store at -20°C (valid for 12 months). Avoid freeze/thaw cycles.
Shipping	Ice bags
Buffer	Rabbit IgG in phosphate buffered saline , pH 7.4, 150mM NaCl, 0.02% New type preservative N and 50% glycerol. Store at +4°C short term. Store at -20°C long term. Avoid freeze / thaw cycle.
Purification	Affinity purification

Application

Dilution Ratio	WB 1:2000-1:20000, ICC/IF 1:200-1:1000
Molecular Weight	162kDa

Antigen Information

Gene Name	EEA1
Alternative Names	Early endosome antigen 1; EEA1; MST105; ZFYVE2;
Gene ID	8411.0
SwissProt ID	Q15075
Immunogen	A synthetic peptide of human EEA1

Background

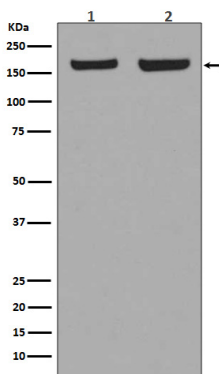
EEA1 is an early endosomal marker and a Rab5 effector protein essential for early endosomal membrane fusion and trafficking

(1-2). The carboxy terminus of EEA1 contains a FYVE domain which binds to phosphatidylinositol-3-phosphate (PtdIns(3)P), targeting EEA1 to early endosomes (3). The stable association of EEA1 with the endosomal membrane is regulated by PI3 kinase, Rab5 and calcium/calmodulin (4-6). Once on the membrane, EEA1 interacts with Rab5, NSF and syntaxin 13 to promote early endosomal membrane docking and fusion (7). Binds phospholipid vesicles containing phosphatidylinositol 3-phosphate and participates in endosomal trafficking.

Research Area

Endocytosis;

Image Data



Western blot analysis of EEA1 expression in (1) HeLa cell lysate; (2) NIH/3T3 cell lysate.