

Product Name: EBF1 (6I9) Rabbit Monoclonal Antibody**Catalog #: AMRe10271**

For research use only.

Summary

Description	Recombinant rabbit monoclonal antibody
Host	Rabbit
Application	WB
Reactivity	Human, Mouse, Rat
Conjugation	Unconjugated
Modification	Unmodified
Isotype	IgG
Clonality	Monoclonal
Form	Liquid
Concentration	0.5mg/ml. The concentration of this product may be batch-dependent.
Storage	Aliquot and store at -20°C (valid for 12 months). Avoid freeze/thaw cycles.
Shipping	Ice bags
Buffer	Rabbit IgG in phosphate buffered saline , pH 7.4, 150mM NaCl, 0.02% New type preservative N and 50% glycerol. Store at +4°C short term. Store at -20°C long term. Avoid freeze / thaw cycle.
Purification	Affinity purification

Application

Dilution Ratio	WB 1:1000-1:5000
Molecular Weight	64kDa

Antigen Information

Gene Name	EBF1
Alternative Names	COE1; EBF; Ebf1; O/E 1; OE1; OLF1;
Gene ID	1879.0
SwissProt ID	Q9UH73
Immunogen	A synthetic peptide of human EBF1

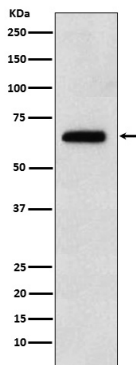
Background

Transcriptional activator which recognizes variations of the palindromic sequence 5'-ATTCCCNNGGAATT-3'. Key pioneer

transcription factor of B-cell specification and commitment (PubMed:27807034). Recognizes variations of the palindromic sequence 5'-ATTCCCNNGGGAATT-3'. Operates in a transcription factor network to activate B-cell-specific genes and repress genes associated with alternative cell fates. For instance, positively regulates many B- cell specific genes including BCR or CD40 while repressing genes that direct cells into alternative lineages, including GATA3 and TCF7 for the T-cell lineage. In addition to its role during lymphopoiesis, controls the thermogenic gene program in adipocytes during development and in response to environmental cold (By similarity).

Research Area

Image Data



Western blot analysis of EBF1 expression in Raji cell lysate.