

Product Name: delta Sarcoglycan (10R2) Rabbit Monoclonal Antibody**Catalog #:** AMRe09908

For research use only.

Summary

Description	Recombinant rabbit monoclonal antibody
Host	Rabbit
Application	WB,IHC,IP,IF-P
Reactivity	Human
Conjugation	Unconjugated
Modification	Unmodified
Isotype	IgG
Clonality	Monoclonal
Form	Liquid
Concentration	0.5mg/ml. The concentration of this product may be batch-dependent.
Storage	Aliquot and store at -20°C (valid for 12 months). Avoid freeze/thaw cycles.
Shipping	Ice bags
Buffer	Rabbit IgG in phosphate buffered saline , pH 7.4, 150mM NaCl, 0.02% New type preservative N and 50% glycerol. Store at +4°C short term. Store at -20°C long term. Avoid freeze / thaw cycle.
Purification	Affinity purification

Application

Dilution Ratio	WB 1:1000-1:5000,IHC 1:100-1:200,IP 1:10-1:100,IF-P 1:100-1:200
Molecular Weight	32kDa

Antigen Information

Gene Name	SGCD
Alternative Names	35DAG; CMD1L; DAGD; Delta-sarcoglycan; LGMD2F; SG delta; SGCD; SGCDP;
Gene ID	6444.0
SwissProt ID	Q92629
Immunogen	A synthetic peptide of human delta Sarcoglycan

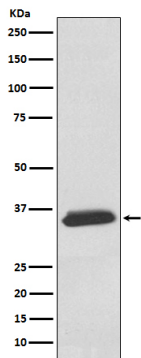
Background

Component of the sarcoglycan complex, a subcomplex of the dystrophin-glycoprotein complex which forms a link between the

F-actin cytoskeleton and the extracellular matrix. Component of the sarcoglycan complex, a subcomplex of the dystrophin-glycoprotein complex which forms a link between the F-actin cytoskeleton and the extracellular matrix.

Research Area

Image Data



Western blot analysis of delta Sarcoglycan expression in Human fetal heart lysate.