
Product Name: Cytokeratin 5 (C-term) (15B6) Rabbit Monoclonal Antibody**Catalog #: AMRe09747**

For research use only.

Summary

| | |
|----------------------|--|
| Description | Recombinant rabbit monoclonal antibody |
| Host | Rabbit |
| Application | WB,IHC,ICC/IF,FC |
| Reactivity | Human |
| Conjugation | Unconjugated |
| Modification | Unmodified |
| Isotype | IgG |
| Clonality | Monoclonal |
| Form | Liquid |
| Concentration | 0.5mg/ml. The concentration of this product may be batch-dependent. |
| Storage | Aliquot and store at -20°C (valid for 12 months). Avoid freeze/thaw cycles. |
| Shipping | Ice bags |
| Buffer | Rabbit IgG in phosphate buffered saline , pH 7.4, 150mM NaCl, 0.02% New type preservative N and 50% glycerol. Store at +4°C short term. Store at -20°C long term. Avoid freeze / thaw cycle. |
| Purification | Affinity purification |

Application

| | |
|-------------------------|---|
| Dilution Ratio | WB 1:1000-1:2000,IHC 1:50-1:200,ICC/IF 1:100-1:200,FC 1:20-1:50 |
| Molecular Weight | 62kDa |

Antigen Information

| | |
|--------------------------|---|
| Gene Name | KRT5 |
| Alternative Names | CK-5; CK5; Cytokeratin-5; DDD; EBS2; K2C5; K5; keratin 5; keratin 5 Keratin, type II; |
| Gene ID | 3852.0 |
| SwissProt ID | P13647 |
| Immunogen | A synthetic peptide of human Cytokeratin 5 |

Background

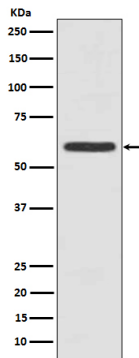
The protein encoded by this gene is a member of the keratin gene family. The type II cytokeratins consist of basic or neutral

proteins which are arranged in pairs of heterotypic keratin chains coexpressed during differentiation of simple and stratified epithelial tissues.

Research Area

Signal Transduction

Image Data



Western blot analysis of Cytokeratin 5 expression in A431 cell lysate.