

Product Name: Cytokeratin 15 (19D17) Rabbit Monoclonal Antibody**Catalog #: AMRe09729**

For research use only.

Summary

Description	Recombinant rabbit monoclonal antibody
Host	Rabbit
Application	WB,FC
Reactivity	Human
Conjugation	Unconjugated
Modification	Unmodified
Isotype	IgG
Clonality	Monoclonal
Form	Liquid
Concentration	0.5mg/ml. The concentration of this product may be batch-dependent.
Storage	Aliquot and store at -20°C (valid for 12 months). Avoid freeze/thaw cycles.
Shipping	Ice bags
Buffer	Rabbit IgG in phosphate buffered saline , pH 7.4, 150mM NaCl, 0.02% New type preservative N and 50% glycerol. Store at +4°C short term. Store at -20°C long term. Avoid freeze / thaw cycle.
Purification	Affinity purification

Application

Dilution Ratio	WB 1:500-1:2000,FC 1:20-1:50
Molecular Weight	49kDa

Antigen Information

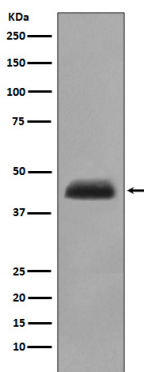
Gene Name	KRT15
Alternative Names	CK-15; CK15; cytokeratin15; K15; K1C15; K1CO; keratin 15; Keratin-15; keratin-15, beta; KRT15; KRTB; type I cytoskeletal 15;
Gene ID	3866.0
SwissProt ID	P19012
Immunogen	A synthetic peptide of human Cytokeratin 15

Background

The keratins are intermediate filament proteins responsible for the structural integrity of epithelial cells and are subdivided into cytokeratins and hair keratins. There are two types of cytoskeletal and microfibrillar keratin: type I (acidic; 40-55 kDa) [K9 to K20] and type II (neutral to basic; 56-70 kDa) [K1 to K8]. Both a basic and an acidic keratin are required for filament assembly. Note: This description may include information from UniProtKB.

Research Area

Image Data



Western blot analysis of Cytokeratin 15 expression in human fetal thymus lysate.