
Product Name: Cytokeratin 13 (15D13) Rabbit Monoclonal Antibody**Catalog #: AMRe09721**

For research use only.

Summary

Description	Recombinant rabbit monoclonal antibody
Host	Rabbit
Application	WB,IHC
Reactivity	Human
Conjugation	Unconjugated
Modification	Unmodified
Isotype	IgG
Clonality	Monoclonal
Form	Liquid
Concentration	0.5mg/ml. The concentration of this product may be batch-dependent.
Storage	Aliquot and store at -20°C (valid for 12 months). Avoid freeze/thaw cycles.
Shipping	Ice bags
Buffer	Rabbit IgG in phosphate buffered saline , pH 7.4, 150mM NaCl, 0.02% New type preservative N and 50% glycerol. Store at +4°C short term. Store at -20°C long term. Avoid freeze / thaw cycle.
Purification	Affinity purification

Application

Dilution Ratio	WB 1:1000-1:5000,IHC 1:100-1:200
Molecular Weight	50kDa

Antigen Information

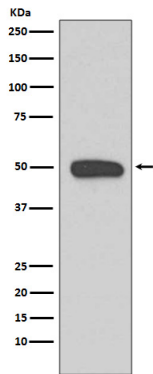
Gene Name	KRT13
Alternative Names	Keratin, type I cytoskeletal 13; Krt1-13; Cytokeratin 13; CK13; Keratin 13; KRT13; WSN2;
Gene ID	3860.0
SwissProt ID	P13646
Immunogen	A synthetic peptide of human Cytokeratin 13

Background

Cytokeratin 13 is a member of the keratin gene family.

Research Area

Image Data



Western blot analysis of Cytokeratin 13 expression in A431 cell lysate.