
Product Name: Cripto1 (12R19) Rabbit Monoclonal Antibody**Catalog #: AMRe09398**

For research use only.

Summary

Description	Recombinant rabbit monoclonal antibody
Host	Rabbit
Application	WB,IP
Reactivity	Human
Conjugation	Unconjugated
Modification	Unmodified
Isotype	IgG
Clonality	Monoclonal
Form	Liquid
Concentration	0.5mg/ml. The concentration of this product may be batch-dependent.
Storage	Aliquot and store at -20°C (valid for 12 months). Avoid freeze/thaw cycles.
Shipping	Ice bags
Buffer	Rabbit IgG in phosphate buffered saline , pH 7.4, 150mM NaCl, 0.02% New type preservative N and 50% glycerol. Store at +4°C short term. Store at -20°C long term. Avoid freeze / thaw cycle.
Purification	Affinity purification

Application

Dilution Ratio	WB 1:500-1:2000,IP 1:20-1:50
Molecular Weight	21kDa

Antigen Information

Gene Name	TDGF1
Alternative Names	CRGF; Cripto 1; cripto; Cripto1 growth factor; TDGF1;
Gene ID	6997.0
SwissProt ID	P13385
Immunogen	Recombinant protein of human Cripto1

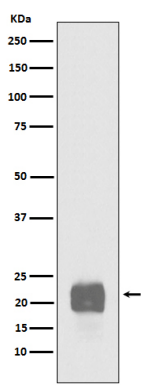
Background

Could play a role in the determination of the epiblastic cells that subsequently give rise to the mesoderm. GPI-anchored cell

membrane protein involved in Nodal signaling. Cell-associated TDGF1 acts as a Nodal coreceptor in cis. Shedding of TDGF1 by TMEM8A modulates Nodal signaling by allowing soluble TDGF1 to act as a Nodal coreceptor on other cells (PubMed:27881714). Could play a role in the determination of the epiblastic cells that subsequently give rise to the mesoderm (PubMed:11909953).

Research Area

Image Data



Western blot analysis of Cripto1 expression in NCCIT cell lysate.