

---

**Product Name: CENPC (9Q1) Rabbit Monoclonal Antibody****Catalog #: AMRe08637**

For research use only.

**Summary**

<b>Description</b>	Recombinant rabbit monoclonal antibody
<b>Host</b>	Rabbit
<b>Application</b>	WB,IHC,FC,IP
<b>Reactivity</b>	Human,Mouse,Rat
<b>Conjugation</b>	Unconjugated
<b>Modification</b>	Unmodified
<b>Isotype</b>	IgG
<b>Clonality</b>	Monoclonal
<b>Form</b>	Liquid
<b>Concentration</b>	0.25mg/ml. The concentration of this product may be batch-dependent.
<b>Storage</b>	Aliquot and store at -20°C (valid for 12 months). Avoid freeze/thaw cycles.
<b>Shipping</b>	Ice bags
<b>Buffer</b>	Rabbit IgG in phosphate buffered saline , pH 7.4, 150mM NaCl, 0.02% New type preservative N and 50% glycerol. Store at +4°C short term. Store at -20°C long term. Avoid freeze / thaw cycle.
<b>Purification</b>	Affinity purification

**Application**

<b>Dilution Ratio</b>	WB 1:1000-1:5000,IHC 1:200-1:1000,FC 1:200-1:500,IP 1:50-1:200
<b>Molecular Weight</b>	107kDa

**Antigen Information**

<b>Gene Name</b>	CENPC
<b>Alternative Names</b>	CENP-C; CENPC1; hcp-4; ICEN7; MIF2;
<b>Gene ID</b>	1060.0
<b>SwissProt ID</b>	Q03188
<b>Immunogen</b>	Recombinant protein of human CENPC

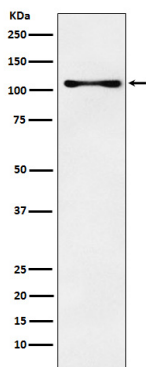
**Background**

Component of the CENPA-NAC (nucleosome-associated) complex, a complex that plays a central role in assembly of

kinetochore proteins, mitotic progression and chromosome segregation. Component of the CENPA-NAC (nucleosome-associated) complex, a complex that plays a central role in assembly of kinetochore proteins, mitotic progression and chromosome segregation. The CENPA-NAC complex recruits the CENPA-CAD (nucleosome distal) complex and may be involved in incorporation of newly synthesized CENPA into centromeres. CENPC recruits DNA methylation and DNMT3B to both centromeric and pericentromeric satellite repeats and regulates the histone code in these regions.

## Research Area

## Image Data



Western blot analysis of CENPC expression in K562 cell lysate.