

Product Name: CDC7 (17K15) Rabbit Monoclonal Antibody**Catalog #: AMRe08530**

For research use only.

Summary

Description	Recombinant rabbit monoclonal antibody
Host	Rabbit
Application	WB,FC
Reactivity	Human,Mouse,Rat
Conjugation	Unconjugated
Modification	Unmodified
Isotype	IgG
Clonality	Monoclonal
Form	Liquid
Concentration	0.5mg/ml. The concentration of this product may be batch-dependent.
Storage	Aliquot and store at -20°C (valid for 12 months). Avoid freeze/thaw cycles.
Shipping	Ice bags
Buffer	Rabbit IgG in phosphate buffered saline , pH 7.4, 150mM NaCl, 0.02% New type preservative N and 50% glycerol. Store at +4°C short term. Store at -20°C long term. Avoid freeze / thaw cycle.
Purification	Affinity purification

Application

Dilution Ratio	WB 1:500-1:2000,FC 1:20-1:100
Molecular Weight	64kDa

Antigen Information

Gene Name	CDC7
Alternative Names	Cell division cycle 7-related protein kinase, EC 2.7.11.1, CDC7-related kinase, HsCdc7, huCdc7, CDC7, CDC7L1; Hsk1 ; CDC7 kinase
Gene ID	8317.0
SwissProt ID	O00311
Immunogen	A synthetic peptide of human CDC7

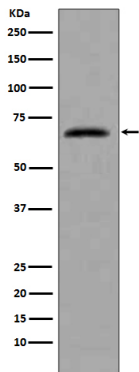
Background

DNA replication in eukaryotic cells is dependent on the phosphorylation of the pre-replicative complex (preRC) at the origin of replication. Two complexes of proteins mediate this event, the cyclin dependent kinase (CDK) complex, and the Cdc7 kinase-ASK complex. Human Cdc7 kinase consists of 574 amino acids with a molecular weight of 55 kDa. The activity of Cdc7 kinase oscillates during cell cycle. The major targets of Cdc7 kinase are proteins that belong to the MCM complex (mini chromosome maintenance proteins). Seems to phosphorylate critical substrates that regulate the G1/S phase transition and/or DNA replication. Can phosphorylate MCM2 and MCM3.

Research Area

Cell Biology

Image Data



Western blot analysis of extracts from HeLa cells, using CDC7 antibody.