
Product Name: Cdc16/APC6 (16I13) Rabbit Monoclonal Antibody**Catalog #: AMRe08499**

For research use only.

Summary

Description	Recombinant rabbit monoclonal antibody
Host	Rabbit
Application	WB,IP
Reactivity	Human,Mouse,Rat
Conjugation	Unconjugated
Modification	Unmodified
Isotype	IgG
Clonality	Monoclonal
Form	Liquid
Concentration	0.5mg/ml. The concentration of this product may be batch-dependent.
Storage	Aliquot and store at -20°C (valid for 12 months). Avoid freeze/thaw cycles.
Shipping	Ice bags
Buffer	Rabbit IgG in phosphate buffered saline , pH 7.4, 150mM NaCl, 0.02% New type preservative N and 50% glycerol. Store at +4°C short term. Store at -20°C long term. Avoid freeze / thaw cycle.
Purification	Affinity purification

Application

Dilution Ratio	WB 1:500-1:2000,IP 1:20-1:50
Molecular Weight	72kDa

Antigen Information

Gene Name	CDC16
Alternative Names	CDC16; ANAPC6; APC6; CDC16 homolog; Cyclosome subunit 6; CDC16Hs; CUT9;
Gene ID	8881.0
SwissProt ID	Q13042
Immunogen	Recombinant protein of human Apc6

Background

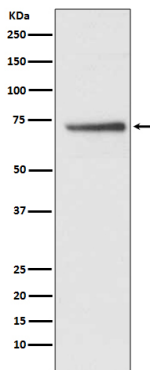
Component of the anaphase promoting complex/cyclosome (APC/C), a cell cycle-regulated E3 ubiquitin ligase that controls

progression through mitosis and the G1 phase of the cell cycle. Component of the anaphase promoting complex/cyclosome (APC/C), a cell cycle-regulated E3 ubiquitin ligase that controls progression through mitosis and the G1 phase of the cell cycle. The APC/C complex acts by mediating ubiquitination and subsequent degradation of target proteins: it mainly mediates the formation of 'Lys-11'-linked polyubiquitin chains and, to a lower extent, the formation of 'Lys-48'- and 'Lys-63'-linked polyubiquitin chains.

Research Area

Cell_Cycle_G1S;Cell_Cycle_G2M_DNA;Oocyte meiosis;Ubiquitin mediated proteolysis;Progesterone-mediated oocyte maturation;

Image Data



Western blot analysis of Cdc16/APC6 expression in HepG2 cell lysate.