

Product Name: CD68 (6P4) Rabbit Monoclonal Antibody**Catalog #: AMRe08435**

For research use only.

Summary

Description	Recombinant rabbit monoclonal antibody
Host	Rabbit
Application	WB,IHC,ICC/IF
Reactivity	Human
Conjugation	Unconjugated
Modification	Unmodified
Isotype	IgG
Clonality	Monoclonal
Form	Liquid
Concentration	0.3mg/ml. The concentration of this product may be batch-dependent.
Storage	Aliquot and store at -20°C (valid for 12 months). Avoid freeze/thaw cycles.
Shipping	Ice bags
Buffer	Rabbit IgG in phosphate buffered saline , pH 7.4, 150mM NaCl, 0.02% New type preservative N and 50% glycerol. Store at +4°C short term. Store at -20°C long term. Avoid freeze / thaw cycle.
Purification	Affinity purification

Application

Dilution Ratio	WB 1:500-1:2000,IHC 1:1000-1:5000,ICC/IF 1:100-1:200
Molecular Weight	37kDa

Antigen Information

Gene Name	CD68
Alternative Names	CD68 antigen; CD68 molecule; Gp110; LAMP4; Macrophage antigen CD68 (microsialin); Macrosialin; SCARD1; Scavenger receptor class D member 1;
Gene ID	968.0
SwissProt ID	P34810
Immunogen	A synthetic peptide of human CD68

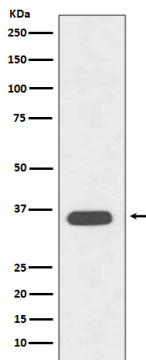
Background

CD68 belongs to a family of acidic, highly glycosylated lysosomal glycoproteins (LGPs) that includes lamp-1 and lamp-2. Play a role in phagocytic activities of tissue macrophages, both in intracellular lysosomal metabolism and extracellular cell-cell and cell-pathogen interactions. Could play a role in phagocytic activities of tissue macrophages, both in intracellular lysosomal metabolism and extracellular cell-cell and cell-pathogen interactions. Binds to tissue- and organ-specific lectins or selectins, allowing homing of macrophage subsets to particular sites. Rapid recirculation of CD68 from endosomes and lysosomes to the plasma membrane may allow macrophages to crawl over selectin-bearing substrates or other cells.

Research Area

Immunology

Image Data



Western blot analysis of CD68 expression in Jurkat cell lysate.