

**Product Name: CD32 (12Q18) Rabbit Monoclonal Antibody****Catalog #: AMRe08359**

For research use only.

**Summary**

<b>Description</b>	Recombinant rabbit monoclonal antibody
<b>Host</b>	Rabbit
<b>Application</b>	WB,IHC,IF-P
<b>Reactivity</b>	Human,Rat
<b>Conjugation</b>	Unconjugated
<b>Modification</b>	Unmodified
<b>Isotype</b>	IgG
<b>Clonality</b>	Monoclonal
<b>Form</b>	Liquid
<b>Concentration</b>	0.5mg/ml. The concentration of this product may be batch-dependent.
<b>Storage</b>	Aliquot and store at -20°C (valid for 12 months). Avoid freeze/thaw cycles.
<b>Shipping</b>	Ice bags
<b>Buffer</b>	Rabbit IgG in phosphate buffered saline , pH 7.4, 150mM NaCl, 0.02% New type preservative N and 50% glycerol. Store at +4°C short term. Store at -20°C long term. Avoid freeze / thaw cycle.
<b>Purification</b>	Affinity purification

**Application**

<b>Dilution Ratio</b>	WB 1:500-1:2000,IHC 1:50-1:100,IF-P 1:50-1:100
<b>Molecular Weight</b>	35kDa

**Antigen Information**

<b>Gene Name</b>	FCGR2A
<b>Alternative Names</b>	CD32; CD32A; CD32B; CD32C; FCG2; FcGR; FCGR2; FCGR2A; FCGR2B; FCGR2C; Fcgr3a; FCRII; IGFR2;
<b>Gene ID</b>	2212.0
<b>SwissProt ID</b>	P12318
<b>Immunogen</b>	A synthetic peptide of human CD32

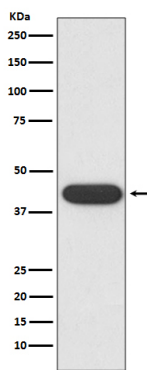
**Background**

Binds to the Fc region of immunoglobulins gamma. Low affinity receptor. By binding to IgG it initiates cellular responses against pathogens and soluble antigens. Binds to the Fc region of immunoglobulins gamma. Low affinity receptor. By binding to IgG it initiates cellular responses against pathogens and soluble antigens. Promotes phagocytosis of opsonized antigens.

## Research Area

Tags & Cell Markers

## Image Data



Western blot analysis of CD32 expression in K562 cell lysate.