
Product Name: CD239 (15I11) Rabbit Monoclonal Antibody**Catalog #: AMRe08298**

For research use only.

Summary

Description	Recombinant rabbit monoclonal antibody
Host	Rabbit
Application	WB,IHC,ICC/IF
Reactivity	Human,Mouse,Rat
Conjugation	Unconjugated
Modification	Unmodified
Isotype	IgG
Clonality	Monoclonal
Form	Liquid
Concentration	0.5mg/ml. The concentration of this product may be batch-dependent.
Storage	Aliquot and store at -20°C (valid for 12 months). Avoid freeze/thaw cycles.
Shipping	Ice bags
Buffer	Rabbit IgG in phosphate buffered saline , pH 7.4, 150mM NaCl, 0.02% New type preservative N and 50% glycerol. Store at +4°C short term. Store at -20°C long term. Avoid freeze / thaw cycle.
Purification	Affinity purification

Application

Dilution Ratio	WB 1:1000-1:5000,IHC 1:200-1:500,ICC/IF 1:100-1:200
Molecular Weight	67kDa

Antigen Information

Gene Name	BCAM
Alternative Names	Bcam; CD239; Lutheran; MSK19;
Gene ID	4059.0
SwissProt ID	P50895
Immunogen	A synthetic peptide of human CD239/BCAM

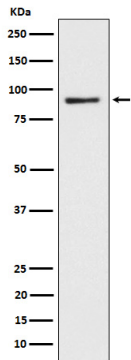
Background

Laminin alpha-5 receptor. May mediate intracellular signaling. Laminin alpha-5 receptor. May mediate intracellular signaling.

Research Area

Cardiovascular

Image Data



Western blot analysis of CD239 expression in HepG2 cell lysate.