

Product Name: CD23 (17L19) Rabbit Monoclonal Antibody**Catalog #: AMRe08292**

For research use only.

Summary

Description	Recombinant rabbit monoclonal antibody
Host	Rabbit
Application	WB,IHC,FC,IF-P
Reactivity	Human
Conjugation	Unconjugated
Modification	Unmodified
Isotype	IgG
Clonality	Monoclonal
Form	Liquid
Concentration	0.23mg/ml. The concentration of this product may be batch-dependent.
Storage	Aliquot and store at -20°C (valid for 12 months). Avoid freeze/thaw cycles.
Shipping	Ice bags
Buffer	Rabbit IgG in phosphate buffered saline , pH 7.4, 150mM NaCl, 0.02% New type preservative N and 50% glycerol. Store at +4°C short term. Store at -20°C long term. Avoid freeze / thaw cycle.
Purification	Affinity purification

Application

Dilution Ratio	WB 1:500-1:2000,IHC 1:100-1:200,FC 1:20-1:50,IF-P 1:100-1:200
Molecular Weight	36kDa

Antigen Information

Gene Name	FCER2
Alternative Names	CD23; FCE2; CD23A; IGEBF; CLEC4J; FCER2;
Gene ID	2208.0
SwissProt ID	P06734
Immunogen	A synthetic peptide of human CD23

Background

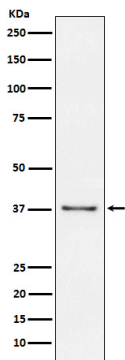
This receptor has essential roles in the regulation of IgE production and in the differentiation of B-cells (it is a B-cell-specific

antigen). Low-affinity receptor for immunoglobulin E (IgE) and CR2/CD21. Has essential roles in the regulation of IgE production and in the differentiation of B-cells (it is a B-cell-specific antigen).

Research Area

Immunology

Image Data



Western blot analysis of CD23 expression in Raji cell lysate.