

Product Name: CD20 (1818) Rabbit Monoclonal Antibody**Catalog #: AMRe08269**

For research use only.

Summary

Description	Recombinant rabbit monoclonal antibody
Host	Rabbit
Application	WB,IHC,ICC/IF,FC,IP,IF-P
Reactivity	Human
Conjugation	Unconjugated
Modification	Unmodified
Isotype	IgG
Clonality	Monoclonal
Form	Liquid
Concentration	0.3mg/ml. The concentration of this product may be batch-dependent.
Storage	Aliquot and store at -20°C (valid for 12 months). Avoid freeze/thaw cycles.
Shipping	Ice bags
Buffer	Supplied in 50mM Tris-Glycine(pH 7.4), 0.15M NaCl, 40%Glycerol, 0.01% New type preservative N and 0.05% protective protein.
Purification	Affinity purification

Application

Dilution Ratio	WB 1:1000-1:5000,IHC 1:50-1:200,ICC/IF 1:10-1:50,FC 1:100-1:200,IP 1:20-1:50,IF-P 1:50-1:200
Molecular Weight	33kDa

Antigen Information

Gene Name	MS4A1
Alternative Names	B1; S7; Bp35; CD20; MS4A2; LEU-16; MS4A1
Gene ID	931.0
SwissProt ID	P11836
Immunogen	A synthetic peptide of human CD20

Background

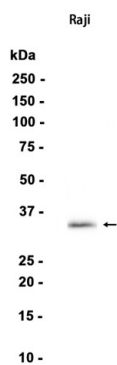
This protein may be involved in the regulation of B-cell activation and proliferation. CD20 (MS4A1, membrane-spanning 4-

domains, subfamily A, member 1) is a member of the membrane-spanning 4A gene family. Members of this nascent protein family are characterized by common structural features and similar intron/exon splice boundaries and display unique expression patterns among hematopoietic cells and nonlymphoid tissues. B-lymphocyte-specific membrane protein that plays a role in the regulation of cellular calcium influx necessary for the development, differentiation, and activation of B-lymphocytes (PubMed:3925015, PubMed:7684739, PubMed:12920111). Functions as a store-operated calcium (SOC) channel component promoting calcium influx after activation by the B-cell receptor/BCR (PubMed:7684739, PubMed:12920111, PubMed:18474602).

Research Area

Immunology; Adaptive Immunity; B Cells; CD; Stem Cells; Hematopoietic Progenitors; Hematopoietic Stem Cells; Human Lineage Negative; Cancer; Tumor immunology; Tumor-associated antigens; Neuroscience

Image Data



Western blot analysis of extracts from Raji cells using RM4178 at 1:1000.