
Product Name: CD1a (11L3) Rabbit Monoclonal Antibody**Catalog #: AMRe08258**

For research use only.

Summary

Description	Recombinant rabbit monoclonal antibody
Host	Rabbit
Application	WB,IHC,IF-P
Reactivity	Human
Conjugation	Unconjugated
Modification	Unmodified
Isotype	IgG
Clonality	Monoclonal
Form	Liquid
Concentration	0.5mg/ml. The concentration of this product may be batch-dependent.
Storage	Aliquot and store at -20°C (valid for 12 months). Avoid freeze/thaw cycles.
Shipping	Ice bags
Buffer	Rabbit IgG in phosphate buffered saline , pH 7.4, 150mM NaCl, 0.02% New type preservative N and 50% glycerol. Store at +4°C short term. Store at -20°C long term. Avoid freeze / thaw cycle.
Purification	Affinity purification

Application

Dilution Ratio	WB 1:1000-1:5000,IHC 1:200-1:1000,IF-P 1:200-1:1000
Molecular Weight	37kDa

Antigen Information

Gene Name	CD1A
Alternative Names	CD 1a; CD1; CD1a; epidermal dendritic cell marker CD1a; FCB6; HTA1; hTa1 thymocyte antigen; R4; T-cell surface antigen T6/Leu-6; T6;
Gene ID	909.0
SwissProt ID	P06126
Immunogen	A synthetic peptide of human CD1a

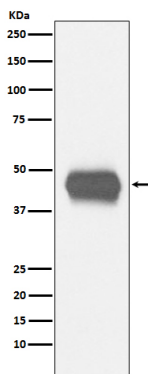
Background

Antigen-presenting protein that binds self and non-self lipid and glycolipid antigens and presents them to T-cell receptors on natural killer T-cells. Antigen-presenting protein that binds self and non-self lipid and glycolipid antigens and presents them to T-cell receptors on natural killer T-cells.

Research Area

Immunology

Image Data



Western blot analysis of CD1a expression in human fetal thymus lysate.