

Product Name: CCR9 (11E6) Rabbit Monoclonal Antibody**Catalog #: AMRe08163**

For research use only.

Summary

Description	Recombinant rabbit monoclonal antibody
Host	Rabbit
Application	WB,ICC/IF,FC
Reactivity	Human,Mouse,Rat
Conjugation	Unconjugated
Modification	Unmodified
Isotype	IgG
Clonality	Monoclonal
Form	Liquid
Concentration	0.5mg/ml. The concentration of this product may be batch-dependent.
Storage	Aliquot and store at -20°C (valid for 12 months). Avoid freeze/thaw cycles.
Shipping	Ice bags
Buffer	Rabbit IgG in phosphate buffered saline , pH 7.4, 150mM NaCl, 0.02% New type preservative N and 50% glycerol. Store at +4°C short term. Store at -20°C long term. Avoid freeze / thaw cycle.
Purification	Affinity purification

Application

Dilution Ratio	WB 1:500-1:2000,ICC/IF 1:100-1:200,FC 1:20-1:50
Molecular Weight	42kDa

Antigen Information

Gene Name	CCR9
Alternative Names	G-protein coupled receptor 28; GPR-9-6; CDw199;CCR9
Gene ID	10803.0
SwissProt ID	P51686
Immunogen	A synthetic peptide of human CCR9

Background

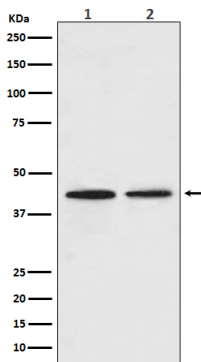
Receptor for chemokine SCYA25/TECK. Subsequently transduces a signal by increasing the intracellular calcium ions level.

Alternative coreceptor with CD4 for HIV-1 infection. Receptor for chemokine SCYA25/TECK. Subsequently transduces a signal by increasing the intracellular calcium ions level.

Research Area

Immunology; Innate Immunity; Chemokines; Beta Chemokine Rec. (CCR)

Image Data



Western blot analysis of CCR9 in (1) A549 cell lysate; (2) Daudi cell lysate.