

---

**Product Name: CCL27 (19J3) Rabbit Monoclonal Antibody****Catalog #: AMRe08142**

For research use only.

**Summary**

<b>Description</b>	Recombinant rabbit monoclonal antibody
<b>Host</b>	Rabbit
<b>Application</b>	WB,ICC/IF,FC
<b>Reactivity</b>	Human,Mouse,Rat
<b>Conjugation</b>	Unconjugated
<b>Modification</b>	Unmodified
<b>Isotype</b>	IgG
<b>Clonality</b>	Monoclonal
<b>Form</b>	Liquid
<b>Concentration</b>	0.5mg/ml. The concentration of this product may be batch-dependent.
<b>Storage</b>	Aliquot and store at -20°C (valid for 12 months). Avoid freeze/thaw cycles.
<b>Shipping</b>	Ice bags
<b>Buffer</b>	Rabbit IgG in phosphate buffered saline , pH 7.4, 150mM NaCl, 0.02% New type preservative N and 50% glycerol. Store at +4°C short term. Store at -20°C long term. Avoid freeze / thaw cycle.
<b>Purification</b>	Affinity purification

**Application**

<b>Dilution Ratio</b>	WB 1:1000-1:5000,ICC/IF 1:100-1:200,FC 1:200-1:500
<b>Molecular Weight</b>	13kDa

**Antigen Information**

<b>Gene Name</b>	CCL27
<b>Alternative Names</b>	ALP; Ccl27; CTACK; CTAK; ILC; PESKY; SCYA27; Small inducible cytokine A27;
<b>Gene ID</b>	10850.0
<b>SwissProt ID</b>	Q9Y4X3
<b>Immunogen</b>	A synthetic peptide of human CCL27

**Background**

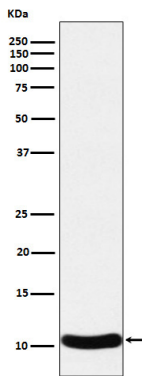
Chemotactic factor that attracts skin-associated memory T-lymphocytes. May play a role in mediating homing of lymphocytes

to cutaneous sites. Binds to CCR10. Chemotactic factor that attracts skin-associated memory T- lymphocytes. May play a role in mediating homing of lymphocytes to cutaneous sites. Binds to CCR10.

## Research Area

Immunology; Innate Immunity; Chemokines; Beta Chemokines (CC)

## Image Data



Western blot analysis of CCL27 expression in Human CCL27 recombinant protein cell lysate.