

Product Name: Cadherin 16 (15J2) Rabbit Monoclonal Antibody
Catalog #: AMRe07826



Summary

Production Name	Cadherin 16 (15J2) Rabbit Monoclonal Antibody
Description	Rabbit Monoclonal Antibody
Host	Rabbit
Application	WB,IHC-P,IP,IF-P
Reactivity	Human,Mouse

Performance

Conjugation	Unconjugated
Modification	Unmodified
Isotype	IgG
Clonality	Monoclonal
Form	Liquid
Storage	Store at 4°C short term. Aliquot and store at -20°C long term. Avoid freeze/thaw cycles.
Buffer	Supplied in 50mM Tris-Glycine(pH 7.4), 0.15M NaCl, 40%Glycerol, 0.01% New type preservative N and 0.05% protective protein.
Purification	Affinity purification

Immunogen

Gene Name	CDH16
Alternative Names	Cadherin 16; Cadherin kidney; CDH16; Kidney cadherin; Ksp cadherin;
Gene ID	1014.0
SwissProt ID	O75309. Recombinant protein of human Cadherin 16

Application

Dilution Ratio	WB 1:1000-1:5000, IHC-P/IF-P 1:500-1:5000, IP 1:50
Molecular Weight	90kDa

Background

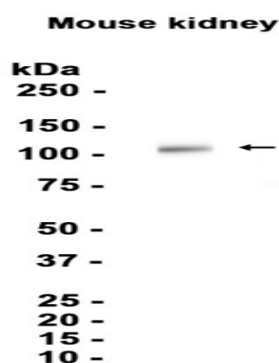
Product Name: Cadherin 16 (15J2) Rabbit Monoclonal Antibody
Catalog #: AMRe07826



Cadherins are calcium dependent cell adhesion proteins. They preferentially interact with themselves in a homophilic manner in connecting cells; cadherins may thus contribute to the sorting of heterogeneous cell types. Cadherins are calcium-dependent cell adhesion proteins. They preferentially interact with themselves in a homophilic manner in connecting cells; cadherins may thus contribute to the sorting of heterogeneous cell types.

Research Area

Image Data



Western blot analysis of extracts from Mouse kidney tissue using RM6027 at 1:1000.

Note

For research use only.