

---

**Product Name: C4A (15Q18) Rabbit Monoclonal Antibody****Catalog #: AMRe07752**

For research use only.

**Summary**

<b>Description</b>	Recombinant rabbit monoclonal antibody
<b>Host</b>	Rabbit
<b>Application</b>	WB,IHC,FC,IF-P
<b>Reactivity</b>	Human
<b>Conjugation</b>	Unconjugated
<b>Modification</b>	Unmodified
<b>Isotype</b>	IgG
<b>Clonality</b>	Monoclonal
<b>Form</b>	Liquid
<b>Concentration</b>	0.5mg/ml. The concentration of this product may be batch-dependent.
<b>Storage</b>	Aliquot and store at -20°C (valid for 12 months). Avoid freeze/thaw cycles.
<b>Shipping</b>	Ice bags
<b>Buffer</b>	Rabbit IgG in phosphate buffered saline , pH 7.4, 150mM NaCl, 0.02% New type preservative N and 50% glycerol. Store at +4°C short term. Store at -20°C long term. Avoid freeze / thaw cycle.
<b>Purification</b>	Affinity purification

**Application**

<b>Dilution Ratio</b>	WB 1:1000-1:5000,IHC 1:200-1:500,FC 1:10-1:100,IF-P 1:200-1:500
<b>Molecular Weight</b>	193kDa

**Antigen Information**

<b>Gene Name</b>	C4A
<b>Alternative Names</b>	Acidic C4; Acidic complement C4; Basic C4; Basic complement C4; C4A; C4A2; C4A3; C4A4; C4A6; C4AD; C4B1; C4B12; C4B2; C4B3; C4BD; C4F; C4S; CPAMD2; CPAMD3;
<b>Gene ID</b>	720;721
<b>SwissProt ID</b>	P0C0L4
<b>Immunogen</b>	Recombinant protein of human C4a

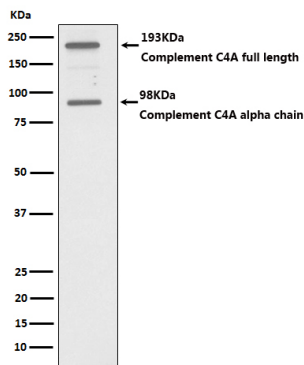
**Background**

Induces the contraction of smooth muscle, increases vascular permeability and causes histamine release from mast cells and basophilic leukocytes. Non-enzymatic component of C3 and C5 convertases and thus essential for the propagation of the classical complement pathway. Covalently binds to immunoglobulins and immune complexes and enhances the solubilization of immune aggregates and the clearance of IC through CR1 on erythrocytes. C4A isotype is responsible for effective binding to form amide bonds with immune aggregates or protein antigens, while C4B isotype catalyzes the transacylation of the thioester carbonyl group to form ester bonds with carbohydrate antigens.

## Research Area

Immunology; Innate Immunity; Complement; Classical Pathway

## Image Data



Western blot analysis of C4A expression in HepG2 cell lysate.