

**Product Name: C1s (6B8) Rabbit Monoclonal Antibody****Catalog #: AMRe07734**

For research use only.

**Summary**

<b>Description</b>	Recombinant rabbit monoclonal antibody
<b>Host</b>	Rabbit
<b>Application</b>	WB
<b>Reactivity</b>	Human
<b>Conjugation</b>	Unconjugated
<b>Modification</b>	Unmodified
<b>Isotype</b>	IgG
<b>Clonality</b>	Monoclonal
<b>Form</b>	Liquid
<b>Concentration</b>	0.5mg/ml. The concentration of this product may be batch-dependent.
<b>Storage</b>	Aliquot and store at -20°C (valid for 12 months). Avoid freeze/thaw cycles.
<b>Shipping</b>	Ice bags
<b>Buffer</b>	Rabbit IgG in phosphate buffered saline , pH 7.4, 150mM NaCl, 0.02% New type preservative N and 50% glycerol. Store at +4°C short term. Store at -20°C long term. Avoid freeze / thaw cycle.
<b>Purification</b>	Affinity purification

**Application**

<b>Dilution Ratio</b>	WB 1:500-1:2000
<b>Molecular Weight</b>	77kDa

**Antigen Information**

<b>Gene Name</b>	C1S
<b>Alternative Names</b>	C1 esterase; C1S;
<b>Gene ID</b>	716.0
<b>SwissProt ID</b>	P09871
<b>Immunogen</b>	A synthetic peptide of human C1s

**Background**

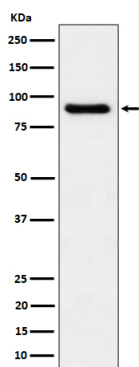
C1s B chain is a serine protease that combines with C1q and C1s to form C1, the first component of the classical pathway of the

complement system. C1r activates C1s so that it can, in turn, activate C2 and C4. C1s B chain is a serine protease that combines with C1q and C1r to form C1, the first component of the classical pathway of the complement system. C1r activates C1s so that it can, in turn, activate C2 and C4.

## Research Area

Immunology; Innate Immunity; Complement; Classical Pathway

## Image Data



Western blot analysis of C1s expression in human plasma cell lysate.