

Product Name: C1QB (12D10) Rabbit Monoclonal Antibody
Catalog #: AMRe07721

Summary

Production Name	C1QB (12D10) Rabbit Monoclonal Antibody
Description	Rabbit Monoclonal Antibody
Host	Rabbit
Application	WB,IHC-P
Reactivity	Human

Performance

Conjugation	Unconjugated
Modification	Unmodified
Isotype	IgG
Clonality	Monoclonal
Form	Liquid
Storage	Store at 4°C short term. Aliquot and store at -20°C long term. Avoid freeze/thaw cycles. Rabbit IgG in phosphate buffered saline , pH 7.4, 150mM NaCl, 0.02% New type
Buffer	preservative N and 50% glycerol. Store at +4°C short term. Store at -20°C long term. Avoid freeze / thaw cycle.
Purification	Affinity purification

Immunogen

Gene Name	C1QB
Alternative Names	C1qb; Complement component 1 q subcomponent B chain;
Gene ID	713.0
SwissProt ID	P02746.

Application

Dilution Ratio	WB 1:1000-1:5000, IHC-P/IF-P 1:50-1:100
Molecular Weight	27kDa

Product Name: C1QB (12D10) Rabbit Monoclonal Antibody
Catalog #: AMRe07721

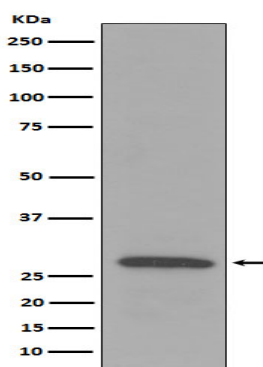


Background

C1q associates with the proenzymes C1r and C1s to yield C1, the first component of the serum complement system. The collagen-like regions of C1q interact with the Ca^{2+} -dependent C1r₂C1s₂ proenzyme complex, and efficient activation of C1 takes place on interaction of the globular heads of C1q with the Fc regions of IgG or IgM antibody present in immune complexes. C1q associates with the proenzymes C1r and C1s to yield C1, the first component of the serum complement system. The collagen-like regions of C1q interact with the Ca^{2+} -dependent C1r₂C1s₂ proenzyme complex, and efficient activation of C1 takes place on interaction of the globular heads of C1q with the Fc regions of IgG or IgM antibody present in immune complexes.

Research Area

Image Data



Western blot analysis of C1QB expression in Human plasma lysate.

Note

For research use only.