

Product Name: C Reactive Protein (15D4) Rabbit Monoclonal Antibody**Catalog #: AMRe07703**

For research use only.

Summary

Description	Recombinant rabbit monoclonal antibody
Host	Rabbit
Application	WB,IHC,IF-P
Reactivity	Human
Conjugation	Unconjugated
Modification	Unmodified
Isotype	IgG
Clonality	Monoclonal
Form	Liquid
Concentration	0.5mg/ml. The concentration of this product may be batch-dependent.
Storage	Aliquot and store at -20°C (valid for 12 months). Avoid freeze/thaw cycles.
Shipping	Ice bags
Buffer	Rabbit IgG in phosphate buffered saline , pH 7.4, 150mM NaCl, 0.02% New type preservative N and 50% glycerol. Store at +4°C short term. Store at -20°C long term. Avoid freeze / thaw cycle.
Purification	Affinity purification

Application

Dilution Ratio	WB 1:500-1:2000,IHC 1:200-1:2000,IF-P 1:200-1:2000
Molecular Weight	25kDa

Antigen Information

Gene Name	CRP
Alternative Names	CRP; Pentraxin 1; PTX1; C reactive protein pentraxin related;
Gene ID	1401.0
SwissProt ID	P02741
Immunogen	Recombinant protein of human C Reactive Protein

Background

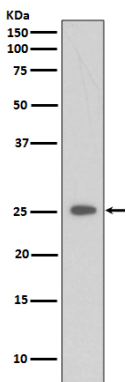
Serum CRP values are routinely measured to detect or monitor many human diseases and minor elevations of C-reactive

protein are predictive of cardiovascular events in patients with coronary heart disease. CRP promotes host defense, is an efficient activator of the classical C cascade, and shown to be opsonic. The opsonic and C activation activities are responsible for the nonspecific host defense activities providing protection in the preimmune stage of acute infections. Displays several functions associated with host defense: it promotes agglutination, bacterial capsular swelling, phagocytosis and complement fixation through its calcium-dependent binding to phosphorylcholine. Can interact with DNA and histones and may scavenge nuclear material released from damaged circulating cells.

Research Area

Immunology

Image Data



Western blot analysis of CRP expression in Etoposide treated 293 whole cell lysates.