

---

**Product Name: BPI (2G15) Rabbit Monoclonal Antibody****Catalog #: AMRe07634**

For research use only.

**Summary**

<b>Description</b>	Recombinant rabbit monoclonal antibody
<b>Host</b>	Rabbit
<b>Application</b>	WB,ICC/IF,FC
<b>Reactivity</b>	Human
<b>Conjugation</b>	Unconjugated
<b>Modification</b>	Unmodified
<b>Isotype</b>	IgG
<b>Clonality</b>	Monoclonal
<b>Form</b>	Liquid
<b>Concentration</b>	0.5mg/ml. The concentration of this product may be batch-dependent.
<b>Storage</b>	Aliquot and store at -20°C (valid for 12 months). Avoid freeze/thaw cycles.
<b>Shipping</b>	Ice bags
<b>Buffer</b>	Rabbit IgG in phosphate buffered saline , pH 7.4, 150mM NaCl, 0.02% New type preservative N and 50% glycerol. Store at +4°C short term. Store at -20°C long term. Avoid freeze / thaw cycle.
<b>Purification</b>	Affinity purification

**Application**

<b>Dilution Ratio</b>	WB 1:1000-1:5000,ICC/IF 1:100-1:200,FC 1:100-1:500
<b>Molecular Weight</b>	54kDa

**Antigen Information**

<b>Gene Name</b>	BPI
<b>Alternative Names</b>	rBPI; BPIFD1; CAP 57; BPI; Bactericidal permeability-increasing protein;
<b>Gene ID</b>	671.0
<b>SwissProt ID</b>	P17213
<b>Immunogen</b>	A synthetic peptide of human BPI

**Background**

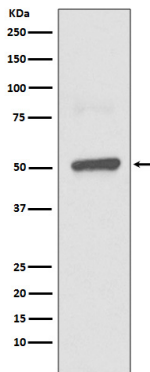
The cytotoxic action of BPI is limited to many species of Gram-negative bacteria; this specificity may be explained by a strong

affinity of the very basic N-terminal half for the negatively charged lipopolysaccharides that are unique to the Gram-negative bacterial outer envelope. Has antibacterial activity against the Gram-negative bacterium *P.aeruginosa*, this activity is inhibited by LPS from *P.aeruginosa*. The cytotoxic action of BPI is limited to many species of Gram-negative bacteria; this specificity may be explained by a strong affinity of the very basic N-terminal half for the negatively charged lipopolysaccharides that are unique to the Gram-negative bacterial outer envelope. Has antibacterial activity against the Gram-negative bacterium *P.aeruginosa*, this activity is inhibited by LPS from *P.aeruginosa*.

## Research Area

Macrophage / Inflamm; Cytotoxic Cells; Phagocytosis; Apoptosis; Metabolism

## Image Data



Western blot analysis of BPI expression in THP1 lysate.