
Product Name: Bcl-XL (4B16) Rabbit Monoclonal Antibody**Catalog #: AMRe07516**

For research use only.

Summary

Description	Recombinant rabbit monoclonal antibody
Host	Rabbit
Application	WB,IHC,ICC/IF,FC,IP
Reactivity	Human,Mouse,Rat
Conjugation	Unconjugated
Modification	Unmodified
Isotype	IgG
Clonality	Monoclonal
Form	Liquid
Concentration	0.48mg/ml. The concentration of this product may be batch-dependent.
Storage	Aliquot and store at -20°C (valid for 12 months). Avoid freeze/thaw cycles.
Shipping	Ice bags
Buffer	Rabbit IgG in phosphate buffered saline , pH 7.4, 150mM NaCl, 0.02% New type preservative N and 50% glycerol. Store at +4°C short term. Store at -20°C long term. Avoid freeze / thaw cycle.
Purification	Affinity purification

Application

Dilution Ratio	WB 1:500-1:2000,IHC 1:200-1:2000,ICC/IF 1:100-1:500,FC 1:20-1:100,IP 1:10-1:50
Molecular Weight	26kDa

Antigen Information

Gene Name	BCL2L1
Alternative Names	Apoptosis regulator Bcl-X; BLC2L; Bcl-2-like 1 protein bclxl; BCL2L; BCL2L1; BCLX;
Gene ID	598.0
SwissProt ID	Q07817
Immunogen	A synthetic peptide of human Bcl-XL

Background

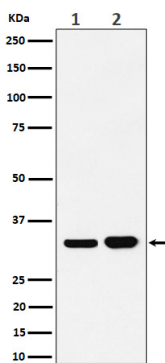
The protein encoded by this gene belongs to the BCL-2 protein family. BCL-2 family members form hetero- or homodimers and

act as anti- or pro-apoptotic regulators that are involved in a wide variety of cellular activities. Potent inhibitor of cell death. Inhibits activation of caspases. Appears to regulate cell death by blocking the voltage- dependent anion channel (VDAC) by binding to it and preventing the release of the caspase activator, CYC1, from the mitochondrial membrane. Also acts as a regulator of G2 checkpoint and progression to cytokinesis during mitosis. Isoform Bcl-X(S) promotes apoptosis.

Research Area

Cell Biology

Image Data



Western blot analysis of Bcl-XL expression in (1) Ramos cell lysate; (2) K562 cell lysate.