
Product Name: BCHE (12S11) Rabbit Monoclonal Antibody**Catalog #: AMRe07492**

For research use only.

Summary

Description	Recombinant rabbit monoclonal antibody
Host	Rabbit
Application	WB
Reactivity	Human
Conjugation	Unconjugated
Modification	Unmodified
Isotype	IgG
Clonality	Monoclonal
Form	Liquid
Concentration	0.5mg/ml. The concentration of this product may be batch-dependent.
Storage	Aliquot and store at -20°C (valid for 12 months). Avoid freeze/thaw cycles.
Shipping	Ice bags
Buffer	Rabbit IgG in phosphate buffered saline , pH 7.4, 150mM NaCl, 0.02% New type preservative N and 50% glycerol. Store at +4°C short term. Store at -20°C long term. Avoid freeze / thaw cycle.
Purification	Affinity purification

Application

Dilution Ratio	WB 1:1000-1:5000
Molecular Weight	68kDa

Antigen Information

Gene Name	BCHE
Alternative Names	BCHE; Butyrylcholine esterase; CHE1; CHE2; Choline esterase II; Cholinesterase (serum) 2; Cholinesterase 1; Cholinesterase; E1;
Gene ID	590.0
SwissProt ID	P06276
Immunogen	A synthetic peptide of human Butyrylcholinesterase

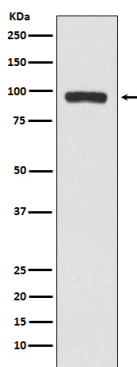
Background

Esterase with broad substrate specificity. Contributes to the inactivation of the neurotransmitter acetylcholine. Can degrade neurotoxic organophosphate esters. Esterase with broad substrate specificity. Contributes to the inactivation of the neurotransmitter acetylcholine. Can degrade neurotoxic organophosphate esters.

Research Area

Neuroscience; Neurotransmitter; Acetylcholine; Neurology process; Neurodegenerative disease; Alzheimer's disease; Signal Transduction; Metabolism Drug; metabolism; Metabolism; Pathways and Processes; Metabolic signaling pathways; Neurodegenerative disease

Image Data



Western blot analysis of BCHE expression in A375 cell lysate.