

**Product Name: BCAR1 (5K7) Rabbit Monoclonal Antibody****Catalog #: AMRe07486**

For research use only.

**Summary**

<b>Description</b>	Recombinant rabbit monoclonal antibody
<b>Host</b>	Rabbit
<b>Application</b>	WB
<b>Reactivity</b>	Human, Mouse, Rat
<b>Conjugation</b>	Unconjugated
<b>Modification</b>	Unmodified
<b>Isotype</b>	IgG
<b>Clonality</b>	Monoclonal
<b>Form</b>	Liquid
<b>Concentration</b>	0.5mg/ml. The concentration of this product may be batch-dependent.
<b>Storage</b>	Aliquot and store at -20°C (valid for 12 months). Avoid freeze/thaw cycles.
<b>Shipping</b>	Ice bags
<b>Buffer</b>	Rabbit IgG in phosphate buffered saline , pH 7.4, 150mM NaCl, 0.02% New type preservative N and 50% glycerol. Store at +4°C short term. Store at -20°C long term. Avoid freeze / thaw cycle.
<b>Purification</b>	Affinity purification

**Application**

<b>Dilution Ratio</b>	WB 1:1000-1:5000
<b>Molecular Weight</b>	93kDa

**Antigen Information**

<b>Gene Name</b>	BCAR1
<b>Alternative Names</b>	BCAR 1; CAS; CAS1; Cass1; CRKAS; p130cas;
<b>Gene ID</b>	9564.0
<b>SwissProt ID</b>	P56945
<b>Immunogen</b>	A synthetic peptide of human BCAR1

**Background**

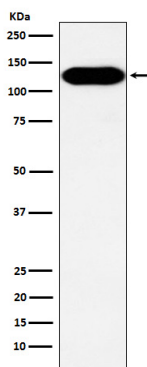
Docking protein which plays a central coordinating role for tyrosine kinase-based signaling related to cell adhesion. Implicated

in induction of cell migration. Overexpression confers antiestrogen resistance on breast cancer cells. Docking protein which plays a central coordinating role for tyrosine kinase-based signaling related to cell adhesion (PubMed:12832404, PubMed:12432078). Implicated in induction of cell migration and cell branching (PubMed:12432078, PubMed:12832404, PubMed:17038317). Involved in the BCAR3-mediated inhibition of TGFB signaling (By similarity).

## Research Area

Signal Transduction; Protein Phosphorylation; Tyrosine Kinases; Cancer

## Image Data



Western blot analysis of BCAR1 expression in A431 cell lysate.