

Product Name: ApoA (4M11) Rabbit Monoclonal Antibody**Catalog #: AMRe07017**

For research use only.

Summary

| | |
|----------------------|--|
| Description | Recombinant rabbit monoclonal antibody |
| Host | Rabbit |
| Application | WB |
| Reactivity | Human |
| Conjugation | Unconjugated |
| Modification | Unmodified |
| Isotype | IgG |
| Clonality | Monoclonal |
| Form | Liquid |
| Concentration | 0.5mg/ml. The concentration of this product may be batch-dependent. |
| Storage | Aliquot and store at -20°C (valid for 12 months). Avoid freeze/thaw cycles. |
| Shipping | Ice bags |
| Buffer | Rabbit IgG in phosphate buffered saline , pH 7.4, 150mM NaCl, 0.02% New type preservative N and 50% glycerol. Store at +4°C short term. Store at -20°C long term. Avoid freeze / thaw cycle. |
| Purification | Affinity purification |

Application

| | |
|-------------------------|-------------------|
| Dilution Ratio | WB 1:2000-1:20000 |
| Molecular Weight | 501kDa |

Antigen Information

| | |
|--------------------------|--|
| Gene Name | LPA |
| Alternative Names | AK38; APOA; apolipoprotein(a); LP; lp(a); LPA; |
| Gene ID | |
| SwissProt ID | P08519 |
| Immunogen | A synthetic peptide of human Lipoprotein a |

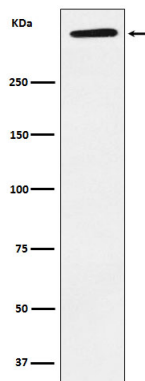
Background

Lipoprotein(a) (Lp(a)) is a lipoprotein subclass assembled in the blood from low density lipoprotein (LDL) molecules and

apolipoprotein-a (apo-a). Lp(a) recruits inflammatory cells through interaction with Mac-1 integrin. Apo(a) is the main constituent of lipoprotein(a) (Lp(a)). It has serine proteinase activity and is able of autoproteolysis. Inhibits tissue-type plasminogen activator 1. Lp(a) may be a ligand for megalin/Gp 330.

Research Area

Image Data



Western blot analysis of ApoA expression in Human plasma lysate.