
Product Name: ANPRB (6S5) Rabbit Monoclonal Antibody**Catalog #: AMRe06938**

For research use only.

Summary

Description	Recombinant rabbit monoclonal antibody
Host	Rabbit
Application	WB
Reactivity	Human, Mouse, Rat
Conjugation	Unconjugated
Modification	Unmodified
Isotype	IgG
Clonality	Monoclonal
Form	Liquid
Concentration	0.5mg/ml. The concentration of this product may be batch-dependent.
Storage	Aliquot and store at -20°C (valid for 12 months). Avoid freeze/thaw cycles.
Shipping	Ice bags
Buffer	Rabbit IgG in phosphate buffered saline , pH 7.4, 150mM NaCl, 0.02% New type preservative N and 50% glycerol. Store at +4°C short term. Store at -20°C long term. Avoid freeze / thaw cycle.
Purification	Affinity purification

Application

Dilution Ratio	WB 1:1000-1:5000
Molecular Weight	117kDa

Antigen Information

Gene Name	NPR2
Alternative Names	AMDM; ANPB; ANPRB; GCB; GUC2B; GUCY2B; Npr2; NPRB; NPRBi;
Gene ID	4882.0
SwissProt ID	P20594
Immunogen	A synthetic peptide of human Natriuretic Peptide Receptor B

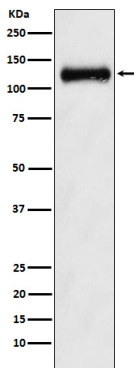
Background

Receptor for the C-type natriuretic peptide NPPC/CNP hormone. Has guanylate cyclase activity upon binding of its ligand. May

play a role in the regulation of skeletal growth. Receptor for the C-type natriuretic peptide NPPC/CNP hormone. Has guanylate cyclase activity upon binding of its ligand. May play a role in the regulation of skeletal growth.

Research Area

Image Data



Western blot analysis of ANPRB expression in Human fetal kidney lysate.