

---

**Product Name: Aminopeptidase A / CD249 (19X10) Rabbit Monoclonal Antibody****Catalog #: AMRe06829**

For research use only.

**Summary**

<b>Description</b>	Recombinant rabbit monoclonal antibody
<b>Host</b>	Rabbit
<b>Application</b>	WB,IHC,IF-P
<b>Reactivity</b>	Human
<b>Conjugation</b>	Unconjugated
<b>Modification</b>	Unmodified
<b>Isotype</b>	IgG
<b>Clonality</b>	Monoclonal
<b>Form</b>	Liquid
<b>Concentration</b>	0.5mg/ml. The concentration of this product may be batch-dependent.
<b>Storage</b>	Aliquot and store at -20°C (valid for 12 months). Avoid freeze/thaw cycles.
<b>Shipping</b>	Ice bags
<b>Buffer</b>	Supplied in 50mM Tris-Glycine(pH 7.4), 0.15M NaCl, 40%Glycerol, 0.01% New type preservative N and 0.05% protective protein.
<b>Purification</b>	Affinity purification

**Application**

<b>Dilution Ratio</b>	WB 1:1000-1:5000,IHC 1:100-1:200,IF-P 1:100-1:200
<b>Molecular Weight</b>	109kDa

**Antigen Information**

<b>Gene Name</b>	ENPEP
<b>Alternative Names</b>	Aminopeptidase A; APA; bp1; CD249; EAP; Enpep; Gp160; Ly51;
<b>Gene ID</b>	2028.0
<b>SwissProt ID</b>	Q07075
<b>Immunogen</b>	A synthetic peptide of human AP-A

**Background**

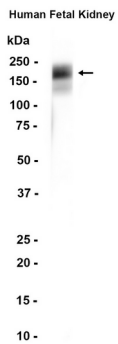
Appears to have a role in the catabolic pathway of the renin-angiotensin system. Probably plays a role in regulating growth and differentiation of early B-lineage cells. Regulates central hypertension through its calcium-modulated preference to cleave N-

terminal acidic residues from peptides such as angiotensin II.

## Research Area

Renin-angiotensin system;

## Image Data



Western blot analysis of extracts from Human fetal kidney tissue.