

---

**Product Name: Alpha Fodrin (15V11) Rabbit Monoclonal Antibody****Catalog #: AMRe06793**

For research use only.

**Summary**

<b>Description</b>	Recombinant rabbit monoclonal antibody
<b>Host</b>	Rabbit
<b>Application</b>	WB
<b>Reactivity</b>	Human, Mouse, Rat
<b>Conjugation</b>	Unconjugated
<b>Modification</b>	Unmodified
<b>Isotype</b>	IgG
<b>Clonality</b>	Monoclonal
<b>Form</b>	Liquid
<b>Concentration</b>	0.5mg/ml. The concentration of this product may be batch-dependent.
<b>Storage</b>	Aliquot and store at -20°C (valid for 12 months). Avoid freeze/thaw cycles.
<b>Shipping</b>	Ice bags
<b>Buffer</b>	Rabbit IgG in phosphate buffered saline , pH 7.4, 150mM NaCl, 0.02% New type preservative N and 50% glycerol. Store at +4°C short term. Store at -20°C long term. Avoid freeze / thaw cycle.
<b>Purification</b>	Affinity purification

**Application**

<b>Dilution Ratio</b>	WB 1:500-1:2000
<b>Molecular Weight</b>	285kDa

**Antigen Information**

<b>Gene Name</b>	SPTAN1
<b>Alternative Names</b>	Alpha II Spectrin; EIEE5; Fodrin alpha chain; NEAS; SPECA; Spectrin; Spna2; SPTAN1;
<b>Gene ID</b>	6709.0
<b>SwissProt ID</b>	Q13813
<b>Immunogen</b>	A synthetic peptide of human Alpha Fodrin

**Background**

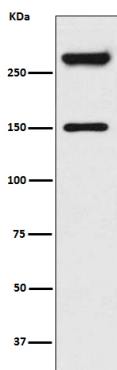
Fodrin (also named nonerythroid spectrin) is a universally expressed membrane-associated cytoskeletal protein consisting of

alpha- and beta-subunits (1). This protein is important for maintaining normal membrane structure and supporting cell surface protein function (1). Alpha-fodrin is one of the primary targets cleaved by caspases during apoptosis. Fodrin, which seems to be involved in secretion, interacts with calmodulin in a calcium-dependent manner and is thus candidate for the calcium-dependent movement of the cytoskeleton at the membrane.

## Research Area

Signal Transduction

## Image Data



Western blot analysis of Alpha Fodrin expression in HeLa cell lysate treated with Camptothecin.