

---

**Product Name: ALDH7A1 (14K11) Rabbit Monoclonal Antibody****Catalog #: AMRe06766**

For research use only.

**Summary**

<b>Description</b>	Recombinant rabbit monoclonal antibody
<b>Host</b>	Rabbit
<b>Application</b>	WB,IHC,ICC/IF,FC,IP
<b>Reactivity</b>	Human,Mouse,Rat
<b>Conjugation</b>	Unconjugated
<b>Modification</b>	Unmodified
<b>Isotype</b>	IgG
<b>Clonality</b>	Monoclonal
<b>Form</b>	Liquid
<b>Concentration</b>	0.5mg/ml. The concentration of this product may be batch-dependent.
<b>Storage</b>	Aliquot and store at -20°C (valid for 12 months). Avoid freeze/thaw cycles.
<b>Shipping</b>	Ice bags
<b>Buffer</b>	Rabbit IgG in phosphate buffered saline , pH 7.4, 150mM NaCl, 0.02% New type preservative N and 50% glycerol. Store at +4°C short term. Store at -20°C long term. Avoid freeze / thaw cycle.
<b>Purification</b>	Affinity purification

**Application**

<b>Dilution Ratio</b>	WB 1:2000-1:20000,IHC 1:200-1:2000,ICC/IF 1:20-1:50,FC 1:20-1:50,IP 1:20-1:50
<b>Molecular Weight</b>	58kDa

**Antigen Information**

<b>Gene Name</b>	ALDH7A1
<b>Alternative Names</b>	ALDH7A1; Antiquitin; ATQ1; Betaine aldehyde dehydrogenase; EPD; PDE;
<b>Gene ID</b>	501.0
<b>SwissProt ID</b>	P49419
<b>Immunogen</b>	A synthetic peptide of human ALDH7A1

**Background**

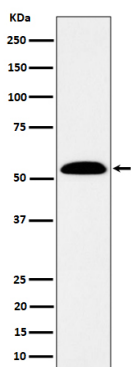
Multifunctional enzyme mediating important protective effects. Metabolizes betaine aldehyde to betaine, an important cellular

osmolyte and methyl donor. Protects cells from oxidative stress by metabolizing a number of lipid peroxidation-derived aldehydes. Involved in lysine catabolism. Multifunctional enzyme mediating important protective effects. Metabolizes betaine aldehyde to betaine, an important cellular osmolyte and methyl donor. Protects cells from oxidative stress by metabolizing a number of lipid peroxidation-derived aldehydes. Involved in lysine catabolism.

## Research Area

Signal Transduction

## Image Data



Western blot analysis of ALDH7A1 expression in SW480 cell lysate.